

## Project Profile

# Adelaide Oval Redevelopment



<b>Client</b>	Boulderstone
<b>Location</b>	Adelaide, South Australia
<b>Duration</b>	Eight weeks
<b>Contract</b>	Adelaide Oval Redevelopment Demolition
<b>Cost</b>	\$1.7 million

## Project Overview

Demolition and salvage works for the highly anticipated Adelaide Oval Redevelopment.

[Follow this link for timelapse footage of demolition.](#)

McMahon Services showed their strength, demolishing the iconic Adelaide Oval Grandstands to ground level and recovering all salvage items in just 18 days.

Engaged by Head Contractor Boulderstone, McMahon Services was responsible for all demolition and salvage works for the \$350.2 million Adelaide Oval Redevelopment in the heart of Adelaide's CBD.

Making way for a new world class stadium, McMahon Services deconstructed the Bradman Stand, Chappel Stands, Clem Hill Stand, Indoor Cricket Centre, SACA offices and various other structures within the precinct.

### McMahon Services

Head Office

T (08) 8203 3100 F (08) 8260 5210

E [adelaide@mcmservices.com.au](mailto:adelaide@mcmservices.com.au)

W [mcmservices.com.au](http://mcmservices.com.au)



Through a highly accelerated eight week program with three simultaneous work fronts, the demolition team ripped through structures mounting up to 18000 tonnes of concrete, 1500 tonnes of bricks, 700 tonnes of steel and 15 tonnes of non-ferrous metals.

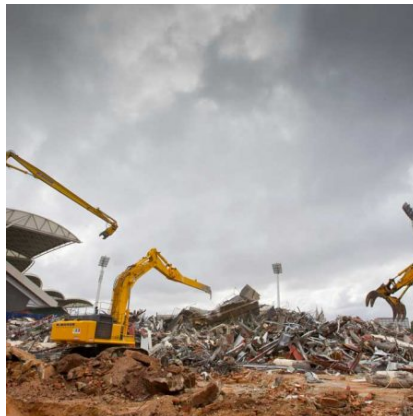
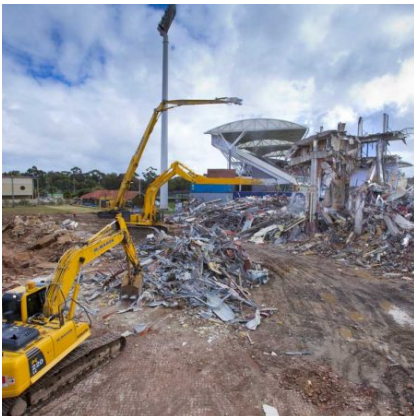
The Ultra High Reach Demolition Excavator performed at its peak, deconstructing the 25 metre high Bradman Stand, Indoor Cricket Centre and Chappel Stands.

The machine's incredible hydraulic shear brought down the enormous structures in a synchronised performance with a fleet of eight excavators ranging from 22 to 150 tonne. McMahon Services also self-delivered crange and rigging using the 250 tonne Liebherr, 100 tonne Tadano and 25 tonne Franna cranes.

The team of 30 worked tirelessly on a seven-day shift rotation to get the job done and were further assisted by McMahon Services' Indigenous contracting division – Intract. A team of nine Intract personnel completed a wide range of jobs from deconstructing seats in the stands, removing internal fixtures and carpet, wet down duty, dust suppression and gate security to training on excavators and bobcats under the supervision of McMahon Services personnel.

To complete the project, McMahon Services sorted, processed and loaded out the demolished material with over 50 truck load out movements per day. The materials were either sent directly to the recycled materials stream or further processed off-site into re-usable products.

Utilising the ResourceCo facilities at Wingfield, McMahon Services successfully recycled 98% of demolition materials on site, exceeding the 95% target.



## McMahon Services

Head Office

T (08) 8203 3100 F (08) 8260 5210

E [adelaide@mcmservices.com.au](mailto:adelaide@mcmservices.com.au)

W [mcmservices.com.au](http://mcmservices.com.au)

