

Project Profile

Port Adelaide Waterfront Precinct Redevelopment



Client	Land Management Corporation / Multiplex / Urban Construct
Location	Port Adelaide, South Australia
Duration	December 2006 - November 2007
Contract	Redevelopment Stage 1 & 2
Cost	\$5 million +

Project Overview

Remediation of 51 hectares of land for residential, commercial, recreational and tourism usage.

The Port Adelaide Waterfront Redevelopment involved the remediation of a very large industrial site that bordered the Port River. Historically the site was a heavy industrial area, but presently was adjacent to a School, and the Port River with its resident dolphins which are an important aspect of the areas' ecotourism activities.

The remediation works undertaken required the site where previously a bitumen plant and a sugar refinery operated for many years, to meet the requirements for residential development.

Contamination type of soil, marine sediment and groundwater included the following:

- > PAHs
- > TPH
- > Heavy metals including copper
- > Cyanide

- > Phenols
- > Asbestos
- > Biological (E. coli)

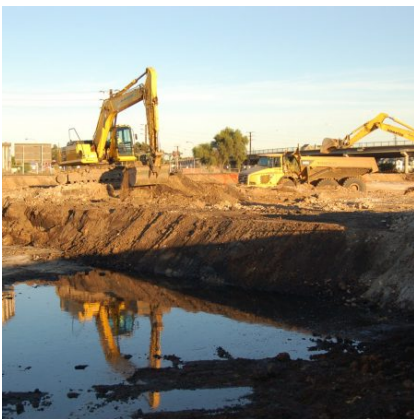
A number of activities were undertaken across the site to meet the remediation goals. These included the following:

- > Over 60,000 cubes of TPH, PAH and heavy metal contaminated material was excavated, placed in stockpiles, independently sampled, classified, and reinstated into repositories and in strategic areas.
- > Removal of bitumen plant waste (tars), and treated on a lined hardstand using a chemical fixation method.
- > Installation of shoring using sheet piling to excavate approximately 1,600 cubic meters of TPH contaminated soil.
- > Treatment of the 1,600 cubic meters of TPH contaminated soil using an enhanced forced aeration bioremediation process over a 6 month time frame.
- > Treatment of TPH contaminated groundwater using a pump and treat system.
- > Hand picking of bonded asbestos from waste materials and soil from across the site.
- > Removal of asbestos containing soil to an EPA approved waste facility.
- > Ongoing management of tidal groundwater in excavation areas.

High level of environmental management to limit impacts in sensitive receptors such as the Port River waterway, and adjacent School.

The site was 'signed off' by a Contaminated Site Auditor. The client was pleased with the project outcome. Impact issues such as dust, noise and odour were managed with zero complaints. An on-site weather station was used to monitor prevailing weather conditions, to ensure works undertaken did not adversely impact neighbors including the School, and sensitive receptors such as the waterway.

McMahon Services won a Case Earth Award for environmental excellence in Category 1 (projects up to \$5 million) at both the State (SA) and National level.



McMahon Services

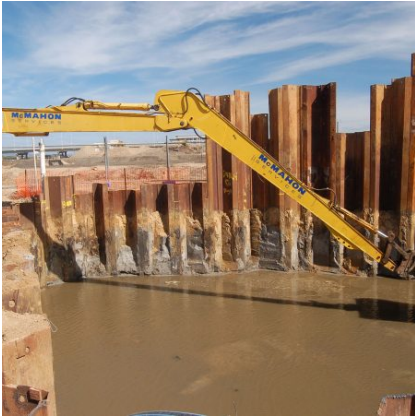
Head Office

T (08) 8203 3100 F (08) 8260 5210

E adelaide@mcmservices.com.au

W mcmservices.com.au





McMahon Services

Head Office

T (08) 8203 3100 **F** (08) 8260 5210

E adelaide@mcmervices.com.au

W mcmervices.com.au

