

MCMAHON SERVICES
CAPABILITY STATEMENT

Contents

01	Company Overview	
02	Our Difference	
04	Our History	
06	Our Management	
09	Our Values	
10	Plant and Equipment	
12	Our Capacity	
14	Sustainability	
	▶ WHSEQ Strategy	14
	▶ Work Health and Safety	15
	▶ Quality Management	15
	▶ Gender Equality	15
	▶ Environmental Management	16
18	Community	
	▶ Community Engagement	18
	▶ Corporate Social Responsibility	18
	▶ Health Kick Program	19
20	Indigenous Engagement	
	▶ Intract Indigenous Contractors	20
22	Expertise and Project Experience	
	▶ Industrial and Resources Construction	22
	▶ Asbestos and Hazardous Waste Removal	23
	▶ Environmental Remediation	24
	▶ Civil Engineering	25
	▶ Building Services	26
	▶ Demolition and Decommissioning	27
	▶ Roofing and Cladding	28
	▶ Marine Contracting	29
	▶ Specialist Shutdown / Industrial Services	30
	▶ Crane and Rigging Services	31
	▶ Emergency Response	32
33	Corporate Information	
	▶ Company Details	33
	▶ Insurances	33
	▶ Licences and Certification	34
35	Awards	



COMPANY OVERVIEW

McMahon Services is one of Australia's leading privately-owned environmental, industrial and construction services providers. Established in 1990 by brothers David and Andrew McMahon, the business has grown from a team of 12 based in Dry Creek into an award winning contractor with a strong national footprint.

With offices in South Australia, Queensland, Western Australia, New South Wales, Victoria and the Northern Territory, we employ more than 500 staff and operate across Australia, from city centres to remote locations.

Through our multi-disciplinary approach, we have successfully completed some of Australia's largest and most significant construction projects with a combined value in excess of \$1 billion. Our work spans high volume small works to large scale multi-million dollar projects over a large geographical area.

We know that our "can-do" attitude sets us apart. We go the distance – going to where our clients need us to be and tackling the tough jobs that few others would. We also provide standout solutions for emergency response, with the ability to quickly mobilise our crews right across the country.

McMahon Services delivers on diversity. We apply our knowledge, resources and experienced teams to work across a broad range of services and markets, providing our clients with in-house expertise and hands-on skills. We also invest heavily into new technologies and boast a \$70 million network of company owned plant and equipment.

We go the distance – going to where our clients need us to be and tackling the tough jobs that few others would.

Our Services

- Civil Engineering
- Building Services
- Industrial and Resources Construction
- Environmental Remediation
- Rigging and Crane Services
- Hazardous Waste Management
- Demolition and Decommissioning
- Asbestos Services
- Industrial Services
- Roofing and Cladding
- Marine Contracting

Our Markets

- Defence
- Resources and Mining
- Property
- Industrial
- Transport
- Water
- Energy
- Health
- Community
- Education

OUR DIFFERENCE

The Complete Solution

We deliver complete project solutions for specialist industrial, construction and environmental services. Our diversity means we can tackle multiple service areas and provide a streamlined management approach.

Self-Delivery

We employ over 500 highly experienced in-house personnel, supported by our extensive \$70 million network of company owned plant and equipment.

National Footprint

We specialise in remote work and can quickly mobilise our personnel, plant and equipment to any location across Australia.

Family Heritage

Our family business heritage means we care about the detail and build meaningful relationships with our clients and key stakeholders.

The Experience

We have over 30 years' experience in the industrial, environmental and construction services industries and have successfully tackled some of the most significant and complex projects in that time.



Safety Focused

Safety is at the forefront of our operations. We hold third party accreditation to AS/NZS 4801:2001 Occupational Health and Safety Management Systems and were the first multi-disciplinary construction services company to achieve Federal Safety Accreditation. Our commitment to safety is further underpinned by our internal safety program – Safety Focused.

Innovation

We continually push the envelope, extending our boundaries of performance. We have built our business on innovation and our award winning methods have been recognised by the industry and our peers.

Indigenous Engagement

We understand our client's commitment to Indigenous engagement and employment. In 2010, we established Intract Indigenous Contractors, providing an Indigenous "work ready" labour force for the construction industry, supported by our internal resources and management systems.





OUR HISTORY

1990

- David and Andrew McMahon establish McMahon Services with 12 staff in Dry Creek (SA)
- Port Pirie office established to provide industrial services to the lead smelter – a contract still held today

1992

- Extensive asbestos removal and demolition works at the Port Augusta Power Station

1997

- Demolition of the Stokes Hill Power Station - single largest demolition project undertaken in the NT

2004

- Darwin office established

2006

- Karratha office established

1991

- Australian National Rail remediation work taking us across the Nullarbor and Alice Springs line

1995

- Demolition, remediation and excavation of the former Carlton United Brewery site in the Brisbane CBD

1998

- Demolition of the former John Martins building - single largest asbestos / demolition project undertaken in SA

2005

- Brisbane office established

2010

- McMahon Services purchases the Ultra High Reach Demolition Excavator – largest of its kind in Australia
- McMahon Services celebrates 20 years

2012

- Perth office established
- Whyalla office established
- New facility established in the Gap Ridge Industrial Estate in Karratha for McMahon Services and Metalcom
- Achieved Federal Safety Re-Accreditation
- SafeworkSA Award - Best Individual Contribution to Workplace Health & Safety - OHS Manager or Person with OHS Responsibility
- Delivered the first ever charge cutting demolition in South Australia
- McMahon Services and Intract Indigenous Contractors become proud Premier Partners of the Northern Territory Football Club – NT Thunder
- Our internal health and wellbeing project – Health Kick – is launched

2015

- Townsville office established
- Awarded largest demolition project in our history - \$25million
- Awarded Lift of the Year for Cranes over 130 tonnes

2009

- McMahon Services awarded Federal Safety Accreditation
- McMahon Services team grows to more than 450 staff

2011

- Decommissioning and scuttling of the ex-HMAS Adelaide
- Official launch of Intract Indigenous Contractors
- Received National CCF Earth Award for Birkenhead Remediation Project
- Gladstone office established

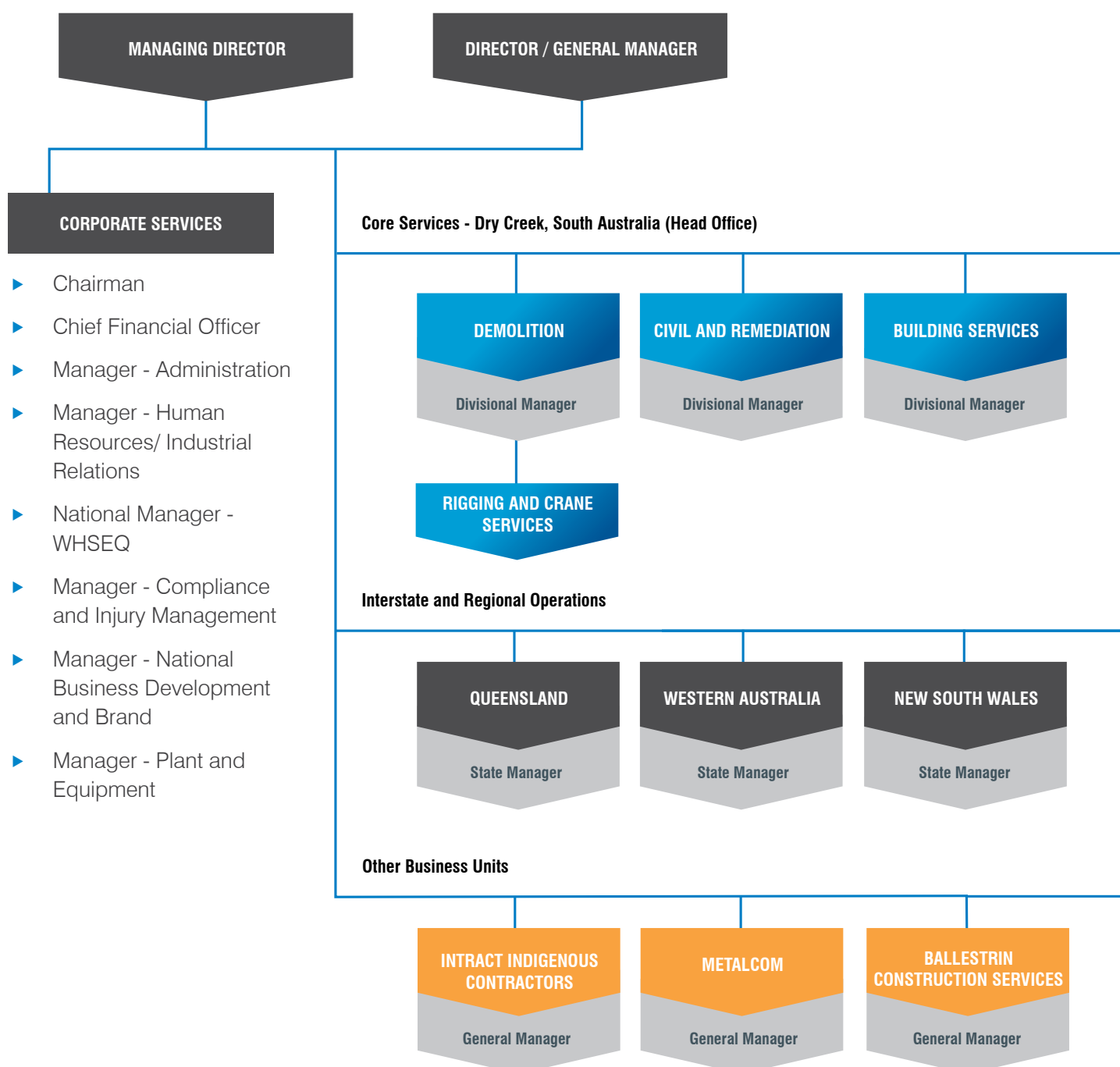
2013

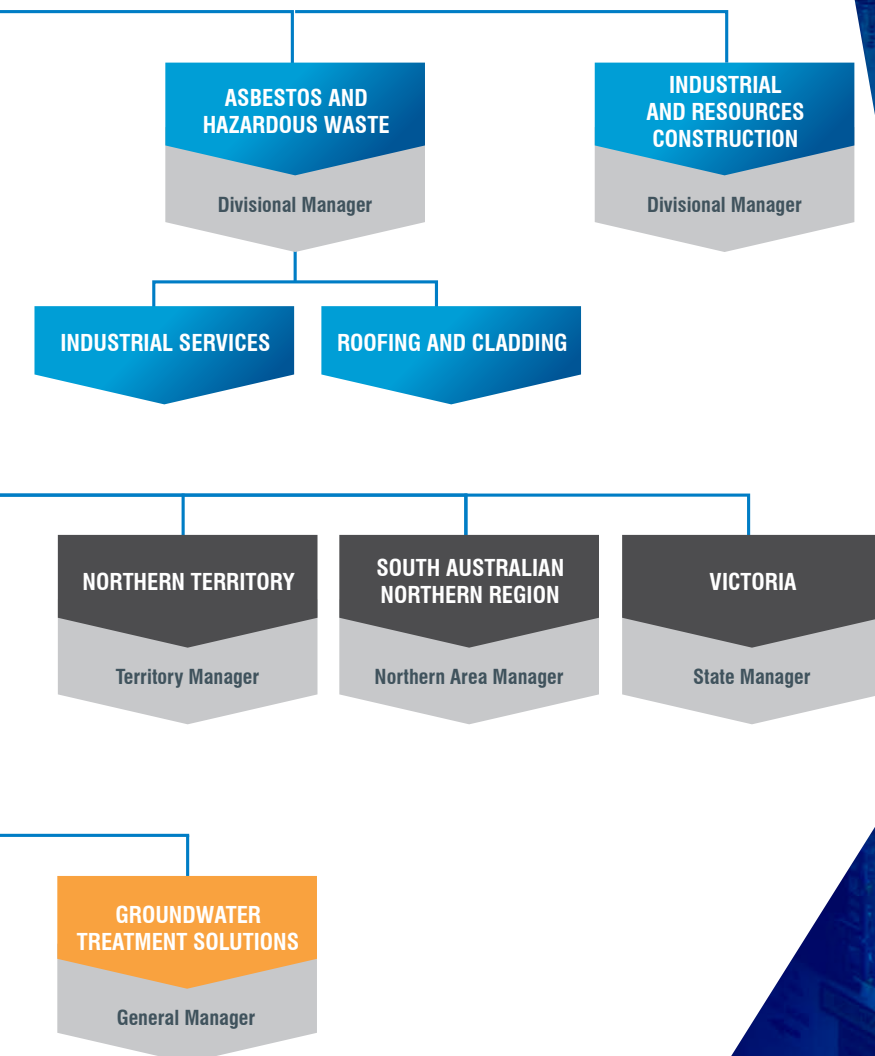
- Intract Indigenous Contractors secures largest project to date – civil works contract for Santos at the Mereenie Oil & Gas Fields
- Offices in Alice Springs, Sydney and Melbourne established

2014

- Industrial & Resources Construction division established
- Intract Australia was established, 51% Indigenous owned enterprise
- National CCF Award- Adelaide Oval Redevelopment

OUR MANAGEMENT







OUR VALUES

Our people are central to what we do

Our greatest asset is our people. It is through the hard work of our teams across the business that McMahon Services has continued to grow and extend the boundaries of performance. Our business is also rich in tradition, with many of our staff being second generation employees.

We have an unbeatable can-do attitude

We are determined to exceed client expectations with every project we undertake, no matter the size. We go the distance and to where our clients need us to be. We have built our business on tackling the tough jobs.

Our core values stem from our beginnings as a small family business and remain unchanged.

We are Safety Focused

Our business is underpinned by a strong safety culture – team mates looking after team mates. Our objective is to continually improve our safety performance to ensure a zero harm environment for our workers, stakeholders and the wider community.

We have a family business heritage

We respect where we have come from and all those involved in the on-going journey from clients to partners, subcontractors, suppliers and staff. We value relationships and seek to build long-term partnerships.

We strive for innovation

Innovation and surpassing industry standards is what we strive for. We approach each project with safe, cost effective and value adding solutions. McMahon Services has been recognised by the industry and our peers for innovation and best practice, and we will continue to reach for new heights.



PLANT & EQUIPMENT

Our \$70 million network of company-owned plant and equipment is capable of servicing projects both locally and in remote locations across Australia.

Our extensive fleet ranges from earthmoving equipment, to elevated work platforms, custom built demolition attachments, cranes and rigging equipment, transport vehicles, and specialist hazardous waste and asbestos removal equipment.

Our complete in-house service offered across Australia includes:

- Float Transportation
- Transport Permits and Escort Services
- Wet Hire Options
- Highly Experienced Operators
- Servicing and Maintenance Workshops
- Mobile Site Service Trucks
- Rigorous Plant Risk Assessments and Maintenance Checks

McMahon Services also houses a full fabrication workshop at Dry Creek (South Australia), dedicated to the development and advancement of custom-made equipment, and extensive warehousing and maintenance facilities.

McMahon Services is continually investing in new technologies to improve performance and efficiency.

Specialist Plant and Equipment

- Ultra High Reach Demolition Excavator (PC1250) – largest of its kind in Australia
- High performance heavy demolition Excavators- 150 tonne
- Precision demolition attachments
- Cranes – capacity ranging from 25 – 250 tonnes
- Komatsu BZ210-1 RETERRA G-Mode – two of only a handful of soil blending machines in Australia
- Powerscreen Warrior 1400 and 1800 - featuring 2-3 way split configuration
- Specialist asbestos removal equipment –
 - Truck mounted high volume HEPA
 - Filtered H-Class vacuum system
 - H-Class industrial vacuums
 - HEPA filtered air filtration units
 - HAZMAT hygiene facility
 - Personnel and equipment decontamination units
 - Positive pressure HEPA filtered air systems for machinery cabins
 - High pressure cleaning units
 - Floor stripping machines (ride-on and self propelled)
 - Floor grinders with HEPA filtration
- Elevated Working Platforms (EWPs)
- Prime movers, side/end tippers, service trucks and fleet of low loaders with capacity to transport up to 115 tonnes
- Hook Lift Bin Trucks
- Static Line System - Safe roof work access
- Mobile Concreting Batching Plant
- Trimble GPS Tracking System and 3D Grade Control Technology
- Hydro-Excavation Units
- Industrial Vacuum Recovery Units



OUR CAPACITY

Office Location	Facility Details
Adelaide – Head Office 26 Duncan Road, Dry Creek SA 5094 PO Box 542 Enfield Plaza SA 5085 T (08) 8203 3100 F (08) 8260 5210 E adelaide@mcmsservices.com.au	Offices, mechanical workshop, metal fabrication workshop, weighbridge, storage facilities, crane and rigging workshop/ storage shed, laydown area.
Port Pirie 30 Ellen Street, Port Pirie SA 5540 PO Box 143 Port Pirie SA 5540 T (08) 8633 5400 F (08) 8633 4441 E ptpirie@mcmsservices.com.au	Offices, mechanical workshop, storage facilities, accommodation block, laydown area.
Whyalla 350 Broadbent Terrace, Whyalla Norrie SA 5608 PO Box 54 Whyalla 5600 T (08) 8644 4400 F (08) 8645 1762 E whyalla@mcmsservices.com.au	Offices, laydown area, workshop, storage facilities, accommodation block.
Darwin 41 Bishop Street, Woolner NT 0820 PO Box 36546 Winnellie NT 0821 T (08) 8930 2500 F (08) 8942 2782 E darwin@mcmsservices.com.au	Offices, laydown area.
Alice Springs Unit 1/30 Elders Street, Alice Springs NT 0870 PO Box 4545 Alice Springs NT 0870 T 0417 820 221 E alicesprings@mcmsservices.com.au	Offices, laydown area, workshop, storage facilities.
Brisbane Unit 14/1440 New Cleveland Road, Chandler QLD 4155 PO BOX 1555 Capalaba QLD 4157 T (07) 3634 4300 F (07) 3245 1685 E brisbane@mcmsservices.com.au	Offices, laydown area, workshop, storage facilities.
Gladstone 4/ 40 Marten Street, South Gladstone 4680 T (07) 4977 7700 E gladstone@mcmsservices.com.au	Offices.

Office Location	Facility Details
Perth Unit 11/524 Abernethy Road, Kewdale WA 6105 PO Box 80 Welshpool WA 6986 T (08) 6350 7000 F (08) 8260 5210 E perth@mcmsservices.com.au	Offices, laydown area, storage facilities.
Karratha L104 Exploration Dr, Gap Ridge, Karratha WA 6714 PO Box 903 Karratha WA 6714 T (08) 9183 9500 F (08) 9185 2543 E karratha@mcmsservices.com.au	Offices, mechanical workshop, storage facilities, accommodation block, laydown area, weighbridge.
Sydney 86 Bourke Road, Alexandria NSW 2015 T (02) 9307 9900 E sydney@mcmsservices.com.au	Offices, laydown area, storage facilities.
Melbourne 1 Cawley Road Brooklyn VIC 3012 T (03) 9351 7800 E melbourne@mcmsservices.com.au	Offices, laydown area, storage facilities.
Townsville 68 Crocodile Crescent, Mount Saint John, Townsville QLD 4818 PO Box 544 Garbutt East QLD 4814 T 0439 853 944 E townsville@mcmsservices.com.au	Offices, laydown area, storage facilities.



SUSTAINABILITY

McMahon Services Australia is certified to the Federal Safety Commission Scheme, AS/NZS 4801:2001 Occupational Health & Safety Management Systems, ISO 9001:2008 Quality Management Systems, and ISO 14001:2004 Environmental Management Systems.

Our WHSEQ Management System integrates the above standards, legislative and regulatory requirements and is supported by a centralised Data Management System that can be accessed by all staff across the business.

This system manages our documentation including acts, regulations, standards, policies, procedures, safe work instructions and forms, as well as maintaining records for training, plant and equipment, and incident management.

Our integrated Business Management System Manual has been developed to provide the guiding principles, objectives and processes of the WHSEQ Management System.

Our commitment to workplace health and safety, quality and environmental management is underpinned by our integrated WHSEQ Plan.

WHSEQ Strategy

McMahon Services integrated WHSEQ management objectives are to establish, implement and continually improve the integrated management system to:

- ▶ Meet and enhance customer requirements
- ▶ Meet regulatory requirements and identified internal standards, national and international standards, codes of practice and stakeholder requirements
- ▶ Identify, isolate and eliminate or minimise quality, environmental, health and safety risks
- ▶ Ensure compliance to McMahon Services quality, safety, and environment policies and procedures
- ▶ To set out procedures and work instructions for all activities, processes and services
- ▶ To establish a system for maintaining progress against targets and the corrective action to be taken in the event of non-conformances
- ▶ To provide a basis against which processes can be formally audited, assessed and any proposed changes and non conformance improvements reviewed
- ▶ To provide a means to determine sequence and interaction of processes
- ▶ To monitor measure and analyse the effectiveness of processes
- ▶ To determine criteria and methods needed to ensure operation and control of processes are effective
- ▶ Demonstrate compliance to industry standards and codes of practice
- ▶ Identify and implement best practice



Work Health and Safety

Our Mission: To foster a safety culture that positions us as industry leaders, where we work together as a team to ensure a zero harm environment for our workers, stakeholders and the wider community.

Our Safety Focused Program is designed to build a strong safety culture throughout our organisation. To implement changes in attitudes and behaviours we work closely with our site personnel by utilising a mix of workshops, training materials and on-site mentors. We encourage open communication with the aim of creating greater awareness to help reduce injuries and improve our safety performance.

We recognise that the involvement of management is critical in improving our culture, particularly at the site manager and supervisor level. Our Safety Focused Program is aimed at developing skills in safety leadership and influencing attitudes and behaviours surrounding best safety practice.



Quality Management

Our Mission: To deliver quality project outcomes through the highest standards of performance, professionalism and customer service.

McMahon Services strives to consistently deliver the highest quality standards across all service areas. We are committed to providing quality products and engaging with our customers to understand their specific needs. Our third party accreditation to AS/NZS ISO 9001:2008 Quality Management Systems underlines this commitment.

Our quality assurance approach is managed by company-wide policies and procedures, and continuous customer feedback.

Gender Equality

We encourage flexibility in the workplace. McMahon Services proactively encourages gender balance and is an equal opportunity employer. Furthermore, we are a compliant employer with the Gender Equality Agency and take an active role in committees such as the Civil Contractors Federation's Women in Civil group.



SUSTAINABILITY

Environmental Management

Our Mission: To protect and preserve the environment around us, by continually refining our methods and reducing our carbon footprint.

Environmental management planning is an integral part of our overall project approach, embedding environmental considerations into every aspect of our operations and activities. Our commitment to the protection and preservation of the environment is best demonstrated by our certification to AS/NZS ISO 14001:2004 (Environmental Management Systems).

Our internal Work Health, Safety, Environmental and Quality Management Plan (WHSEQP) addresses how we manage environmental impacts and aspects such as:

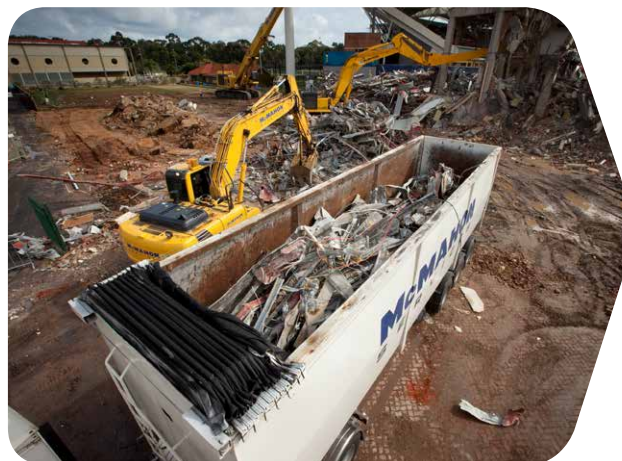
- Construction noise
- Vibration
- Air quality
- Soil quality and conservation
- Water quality
- Protection of flora and fauna
- Visual impacts
- Aboriginal and natural heritage
- Hazardous waste and other dangerous materials

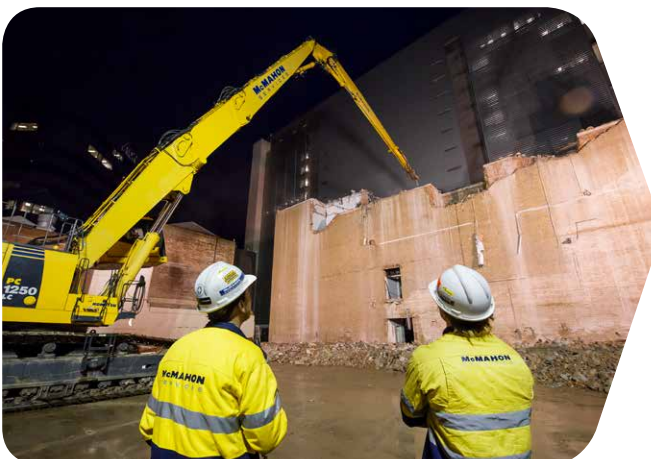
McMahon Services has been recognised for outstanding environmental management, receiving a number of CCF Earth Awards for projects including –

- **Housing SA Birkenhead Remediation**
Remediation of over 8,000 tonnes of contaminated waste soils along with design and development of Australia's first Multiple Waste Treatment facility.
- **SA Water Thebarton Remediation**
Transforming a former maintenance depot into a community parkland.
- **Adelaide Oval Redevelopment**
Detailed civil works and successfully installing a stormwater system requiring 'breakthrough' into the River Torrens.

Waste Minimisation

McMahon Services has clear objectives in relation to minimising waste and understands its obligations to avoid generating waste where possible. At every opportunity, McMahon Services ensures the recycling and reuse of waste generated by our operations and site activities and have developed a number of key initiatives. These include the recycling and reuse of construction and demolition waste materials generated on site, remediation and reuse of contaminated materials, and cost-effective recycling through partnerships with leading waste facilities such as SITA and ResourceCo.





COMMUNITY

Community Engagement

McMahon Services strives to develop powerful partnerships with communities in which we work. It is our commitment to use local services and suppliers where possible, engage in community sponsorships, Indigenous employment and training, and pro bono work to help create positive long-term relationships, adding further value to our business.

We also help to build sustainable communities through our commitment to local employment and skills training.

We understand that our operations can have short and long-term impacts on communities, so we aim to minimise project disruptions, encourage and support open communication, and actively tailor projects in consultation with all key stakeholders.



Corporate Social Responsibility

Northern Territory Football Club – Working with the NT Thunder as Premier Partners to help inspire young Indigenous people to participate in sport and improve education, employment, training, health and leadership.

‘Tee Off Fore Life Day’ - Supporting the Royal Adelaide Hospital Research Fund.

Nyrstar Smelters Ball - Raising funds for the Uniting Care Wesley’s Child Foster Home Upgrade in Port Pirie.

Movember – Playing our part in changing the face of Men’s health in Australia.

Ronald McDonald House – Donated demolition services to make way for the new, state-of-the-art facility.

Muggy’s Accommodation – Supported the Salvation Army by preparing the site pro-bono ready for construction.

Riverland Paddling Marathon – Sponsorship of printed safety bibs.

“Under the Lights” – Sponsors of a Night of Footy & Fashion in support of the Cure for Life Foundation and Adelaide 4 Africa.

The Leukemia Foundation’s World’s Greatest Shave – Proudly supporting and raising funds for the 2013 event.

World Festival of Magic – Sponsorship of the Adelaide Rotary Club for children with special needs.

Simply Football - Sponsorship of youth football club.



Health Kick Program

In 2012 McMahon Services launched Health Kick - an internal health and wellbeing program aimed at educating our staff about healthy lifestyle choices. The program was designed to provide all employees with the tools to improve productivity and efficiency on the worksite, and to also make positive changes at home with their families.

Health Kick focuses not only on physical health, but also mental wellbeing and "speaking out without fear or favour".

The Program is now operating across all offices through education sessions, team building activities, monthly newsletters and email campaigns, to help create greater awareness and show a continued investment in our greatest asset - our people.

The Program is off to a kicking start, with key highlights including our Corporate Bowel Screening Program, our very own healthy cooking competition - McMasterchef - and KickBack newsletter featuring information from our program nutritionist.



Kick start your health

McMAHON
SERVICES

INDIGENOUS ENGAGEMENT

Intract Indigenous Contractors

Intract Indigenous Contractors was established to provide Indigenous people with life long careers in the construction and building maintenance industries. Delivering stable, long-term employment for Indigenous Australians – Closing the Gap.

In 2010, the vision came to life and Intract Indigenous Contractors was launched as a business unit of McMahon Services. Today, Intract Australia Pty Ltd is a standalone 51% Indigenous owned, managed and controlled enterprise. The civil contracting and general building organisation has bases in Darwin, Alice Springs and Adelaide, operating throughout Australia. Since its inception, Intract has provided training and employment for over 150 Indigenous people across Australia, proudly boasting a majority Indigenous workforce.

Intract Australia Pty Ltd has delivered on its mission to provide long-term employment, and instil confidence into local Indigenous communities through the provision of stable jobs, skills training, mentoring and support. Achieving great success so far, Intract has completed a diverse range of projects throughout Australia.

From rebuilding Aboriginal Wellbeing Centres across South Australia's Native Title lands, securing and delivering two four-and-a-half-year contracts for the NT Government Housing Maintenance and Tenancy Management Services, in remote Western Arnhem Land at Maningrida and Gunbalanya, to constructing Drill Leases at the Santos Mereenie Oil and Gas Fields.

Supported by founding partners McMahon Services, Intract Australia has had the benefit of guidance and direction by a leading construction services provider.

In it's 26 year history, McMahon Services has developed a strong track record in working with Indigenous Australians all over the country. Working throughout Indigenous communities has given them a deep insight into the character and culture of Australia's Indigenous people; highlighting the existing gap between their desire for professional training, education and the opportunities actually available to them.

It was out of these experiences that the vision for Intract was born. McMahon Services were determined to create a framework for the education and training of Indigenous Australians, which would in turn generate career pathways leading towards long-term, meaningful employment.

The Intract Australia business was developed to help Indigenous people 'Walk a New Path' and that's exactly what we have achieved. Our simple business model of 'train on the job – stay on the job' is proving to be a great success. We now look forward to the next chapter of Intract and new opportunities for future growth.





Project Snapshot:

- ▶ Gunlom Falls Drainage and Pavement Repairs - Civil Works
- ▶ Provision of Housing Maintenance Coordination Services and Tenancy Management Services - General Building Works
- ▶ Jim Jim Falls and Twin Falls 4WD Access Track Upgrades - Civil Works
- ▶ APY Family Wellbeing Centres - General Building and Civil Works
- ▶ Port Melville Logistics Hub - Civil Works
- ▶ Santos Mereenie Oil and Gas Fields- General Building and Civil Works
- ▶ Santos Moomba FC60 and FC70 Camp Upgrade - General Building and Civil Works
- ▶ Cook Dump Remediation and Diesel Tank Pad Construction
- ▶ Cavan Youth Training Centre Civil Works
- ▶ Adelaide Oval Redevelopment - Demolition and Civil Works
- ▶ OZ Minerals' Carrapateena Mine Civil Works and Village Construction
- ▶ West Venture Campus Redevelopment 2 Stage Civil Works

www.intract.com.au



INDUSTRIAL & RESOURCES CONSTRUCTION

McMahon Services has built our business to create a vertically integrated solution for Industrial and Resources Construction Management and Project Delivery. From design, engineering and feasibility to specialist building trades, Indigenous engagement and plant and equipment, McMahon Services offer a complete in-house approach to self-deliver contracts with minimal need for subcontractors.

We offer strong risk mitigation control through solid project governance of costs, time, quality, safety and the environment. Our streamlined, self-delivery approach provides our clients with a 'hassle free' single contractor engagement model.

Additional benefits of this model include reduced response time to changing project requirements, the ability to make decisions quickly and a single project management system.

Project Delivery

- Project Feasibility
- Design
- Engineering
- Approvals
- Programming
- Costing
- Execution
- WHSEQ
- Sustaining Capital

Market / Industry Sectors

- Oil and Gas
- Manufacturing
- Industrial
- Mining and Resources
- Health and Education
- Defence
- Property
- Logistics - Road and Rail
- Utilities and Telecommunications



ASBESTOS & HAZARDOUS WASTE REMOVAL

McMahon Services is an 'A Class' Asbestos Removal Contractor and holds licences in all states and territories across Australia. We have completed some of the largest asbestos and hazardous waste removal projects ever undertaken in Australia, with over 30 years' experience in this specialised, high risk field. Our depth of expertise, innovation, safety standards, specialist plant and equipment, and all embracing insurance sets us apart.

- ▶ 'Class A' asbestos removal contractor in all States and Territories of Australia
- ▶ Over 100 asbestos removal technicians, with 'Class A' licenses and ongoing medical surveillance
- ▶ Commercial and industrial asbestos removal
- ▶ Removal of asbestos from roofing, wall sheeting, fences, tiles and other materials, including putty, electrical boards and tape

- ▶ Asbestos surveys, testing and analysis
- ▶ Removal of asbestos pipe lagging and re-insulation
- ▶ Remediation of asbestos and other contaminants in soil
- ▶ Removal and transport of waste to approved facility
- ▶ 24/7 emergency response - spills, fire, wind and water damage

McMahon Services holds the most all-embracing asbestos insurance cover available in Australia, which not only protects ourselves as contractors, but transfers benefits to our clients, by incorporating both parties under the policies:

- ▶ Contractor's Pollution Liability (Asbestos Disease)
- ▶ Public Products Liability - Asbestos Removal & Demolition



ENVIRONMENTAL REMEDiation

McMahon Services is a specialist environmental remediation contractor providing turn-key treatment services. We have tackled some of the most complex remediation projects, surpassing industry standards. Our wide range of experience and expertise sets us apart and we continually deliver to the highest standards as demonstrated through our numerous awards, industry acknowledgements and most importantly, client relationships.

Contaminated soil and solid waste treatment

- ▶ Acid sulphate soil - in-situ and ex-situ
- ▶ AFFF contaminated soil treatment and management
- ▶ Bioremediation - biopiling, landfarming, co-composting, enhanced bioremediation
- ▶ Chemical stabilisation - fixation, immobilisation, microencapsulation, solidification
- ▶ Chemical oxidation - in-situ and ex-situ
- ▶ Geotechnical improvement - physical and chemical
- ▶ Lab-scale and pilot-scale treatment trials and approvals

Groundwater and wastewater treatment

- ▶ Pump and treat system installation and servicing
- ▶ Permeable reactive barrier (PRB) installation
- ▶ In-situ treatment system installation and servicing
- ▶ Acid mine drainage

Site remediation

- ▶ Screening and crushing
- ▶ Contaminated soil, sludges and liquid waste treatment
- ▶ Stockpile management and material tracking
- ▶ Repository construction and capping
- ▶ Hydroseeding, revegetation and landscaping
- ▶ Odour, dust, noise and vibration monitoring and control

Waste management

- ▶ Drilling mud
- ▶ Asbestos - bonded and friable
- ▶ Contaminated timber
- ▶ PCB oils and fluids
- ▶ Radioactive material
- ▶ All contaminated, prescribed, regulated and hazardous waste



CIVIL ENGINEERING

McMahon Services is a leading and award winning civil contractor with over 26 years' experience in delivering quality, innovative and cost-effective civil projects across a wide variety of markets. Our work spans large-scale inner-city projects through to remote works, with the ability to mobilise resources across Australia.

- ▶ Major bulk earthworks including site clearing, bulk cut to fill and excavation of basements, car parks, building plateaus including safe construction of batters, benches and ramps
- ▶ All work associated with Civil earthworks installation and construction - Subdivisions and land developments
- ▶ Detailed excavation - strip footings, pad footings, pile caps and setdowns
- ▶ Installation of all underground infrastructure including potable water, firemains, stormwater, sewer, electrical and communications
- ▶ Construction / upgrades of roads and car parks including asphalt, spray seal, concrete and block paving
- ▶ Installation of upright kerbs, signage, linemarking, wheelstops and bollards
- ▶ Excavation and construction of swales, detention ponds and wetlands
- ▶ Construction of concrete infrastructure including retaining walls and stairs
- ▶ Foreshore redevelopments
- ▶ Landscaping hard - street furniture, feature walls, footpaths, edging, timber
- ▶ boardwalks, water features, fencing, lighting and concrete structures
- ▶ Landscaping soft - cultivation, topsoiling, planting and hydroseeding
- ▶ Civil demolition of existing infrastructure for recycling



BUILDING SERVICES

Our specialist in-house trades can deliver a range of building works from internal and external refurbishments and fit-outs to mine camp infrastructure.

- ▶ Internal and external refurbishments inclusive of painting, tiling, carpet laying, vinyl coverings, brickwork and masonry
- ▶ Plumbing - first and second fix
- ▶ Carpentry - first and second fix
- ▶ Ceilings, wall linings and eaves linings
- ▶ Asbestos removal and reinstatement
- ▶ Electrical services including first and second fix, data and communications reticulation, installation of audio visual systems and PABX and data cabinet installations
- ▶ Hardware and security upgrades
- ▶ Metalwork and structural steel
- ▶ New builds for industrial and commercial premises
- ▶ Maintenance of commercial and industrial facilities
- ▶ Roofing and cladding including; guttering, downpipes and lead flashing reinstatement
- ▶ Concreting - excavation, foundations, piling, floors, shotcrete, decking, slabs, decorative concrete
- ▶ Landscaping - infrastructure construction, street furniture, walls and edging, timber decking and boardwalks, paving and finishes
- ▶ Access and mobility compliance and upgrades
- ▶ Mine camp construction and associated trades



DEMOLITION & DECOMMISSIONING

We have been a leading provider of demolition services for over 30 years and have completed some of the largest demolition projects ever undertaken in Australia. Our highly experienced demolition team is equipped with a wide range of excavators, specialist demolition attachments, waste processing and removal equipment, and a fleet of self-delivered cranes.

- Explosive charge felling solutions
- Demolition and decommissioning of obsolete industrial and commercial sites
- Multi-level and high rise demolition
- Internal demolition, refurbishment and structural modifications
- Housing demolition
- Vessel dismantle and disposal
- Emergency response

- Mine site decommissioning
- Total or partial demolition of buildings and structures erected by tilt-up construction
- Heritage works and partial demolition of buildings and structures, including the removal of brittle or fragile roof material
- High risk craneage and rigging deconstruction projects
- Removal, decontamination and remediation of hazardous materials including lead, mercury, PCB's and radioactive material
- Engineered structural modifications and propping
- Recycling and resource recovery
- Dust, debris, noise, odour and vibration monitoring and control
- Integrated early civil works and remediation packages following on from demolition work



ROOFING & CLADDING

The Roofing and Cladding division has completed a range of diverse roofing and cladding projects across the defence, health, general commercial, institutional and education sectors. With a focus on safe work practices, we can deliver complete roofing and cladding systems from installation to repairs and maintenance.

Installation Services

- Specialising in complete roofing and cladding services for commercial and industrial construction
- From large-scale industrial structures to architectural buildings, warehouses, schools and hospitals
- Design and construction of roofing and cladding systems
- External and internal wall cladding
- Suspended ceiling systems and acoustic linings
- Installation of gutter systems, including eaves gutters, box gutters, rainheads, and downpipes (internal and external)
- Heritage works, including lead works and soldering of galvanised steel / copper
- Veranda and pergola construction, including kit form products
- Roofing and wall cladding replacement

Commercial and Industrial Maintenance Services

- Responding to roof leaks
- Cleaning of gutters and downpipes
- Scheduled maintenance programs
- Roof sheet, wall cladding, gutter and downpipe repairs
Skylight replacement
- 24/7 emergency response
- Insurance work

Innovation

To ensure the highest safety standards, we have designed and implemented innovative solutions to protect our personnel when working at heights.

- Walkway System - Designed and purpose built for the Adelaide Aquatic Centre project. This 30 metre access walkway system allowed staff to access the roof during both demolition and reinstatement works. A lifting spreader beam was also manufactured to raise the walkway into position and pick up the 32 metre long Dampalon and metal roof sheets required.



MARINE CONTRACTING

McMahon Services is highly skilled in completing projects in, around or on water, providing civil engineering, demolition, hazardous waste removal and other industrial and construction services for marine environments

- Installation or removal of piles
- Removal or construction of bridges, boardwalks, piers and jetties
- Pipeline trenching and construction
- Port and marine infrastructure works
- Vessel decommissioning and dismantle

- Demolition of existing marine infrastructure
- Cliff stabilisation
- Levee support and construction
- Remediation and renovation of marine infrastructure including high pressure cleaning, replacement of corroded elements and timber, steelwork repairs and painting
- Acid sulphate soils treatment



McMahon Services is highly skilled in completing projects in, around or on water.



INDUSTRIAL SERVICES

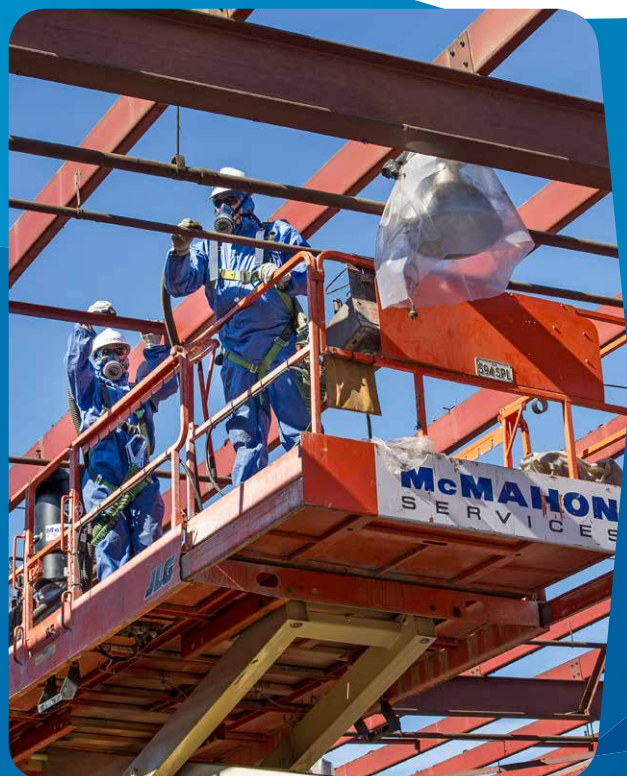
Specialist Shutdown Services

Our shutdown experience spans over 26 years, with an extensive capability that includes the following -

- ▶ Asbestos and Hazardous Waste
- ▶ Demolition and decommissioning
- ▶ Environmental remediation
- ▶ Civil construction
- ▶ Building works
- ▶ Industrial cleaning
- ▶ Roofing and cladding
- ▶ Waste management
- ▶ Cranage and rigging
- ▶ Plant and equipment hire
- ▶ Concrete construction
- ▶ Labour hire

The following industrial services compliment our specialist shutdown works -

- ▶ Maintenance contracts
- ▶ High pressure cleaning
- ▶ Vacuum loading
- ▶ Abrasive cleaning
- ▶ Liquid spills
- ▶ Emergency response - fire/water damage, clean-ups
- ▶ Labour hire
- ▶ Waste management



CRANE & RIGGING SERVICES

McMahon Services operates a modern fleet of cranes, machinery and transport vehicles to complete the most demanding of lifting projects. With over 26 years of expertise, our fleet is supported by highly skilled and experienced operators, each holding tickets and licences for specialised rigging services. Our riggers are also trained in asbestos removal and working in high risk environments, such as confined spaces.

- ▶ Total solution for any lifting or access requirements
- ▶ Diverse fleet with lifting capabilities from 25 tonnes to 250 tonnes
- ▶ Full risk assessments and lift studies to identify potential challenges and develop the right action plan
- ▶ Deconstruction and dismantling
- ▶ Heritage lifting
- ▶ Asbestos roofing and roof reinstatement
- ▶ Static Line System installation
- ▶ Specialist lifting and rigging services including; jacking and skating boilers and air handling units
- ▶ General construction crane lifts including; modular accommodation, tank system installation and pipework bundles, hoppers, structural steel, precast erection (building tilt-up) and signage installation
- ▶ 24/7 emergency response
- ▶ Attachments designed and fabricated in-house to meet specific project needs
- ▶ Project scoping, management and delivery, including detailed lift studies
- ▶ Custom built lifting attachments including; spreader bars, man/work cages and lifting beam



EMERGENCY RESPONSE

Our extensive emergency response capability spans from derailment clean-ups and recovery, through to hazardous spills, fuel and roof leaks, fire, storm and water damage, asbestos removal and risk management.

McMahon Services has been involved in several significant emergency projects, setting new benchmarks for responsiveness and efficiency.

Our immediate response ensures we arrive on-site as soon as possible to assess the damage and tackle the tasks at hand.

We are able to provide rapid deployment of specialised plant and equipment ranging from excavators and earthmoving equipment, to craneage, purpose built containerised spill contaminant modules, generators and lighting towers.

Our core team in Adelaide can mobilise personnel and equipment to any location in Australia, which is further supported by our offices and resources in Regional South Australia, Queensland, Northern Territory and Western Australia.



CORPORATE INFORMATION

Company Details

Company name:	McMahon Services Australia Pty Ltd
ABN:	75 097 072 565
ACN:	097 072 565
Date of incorporation:	February 9, 1990
Registered address:	26 Duncan Road Dry Creek SA 5094
Postal address:	PO Box 542, Enfield Plaza, SA 5085
Telephone:	(08) 8203 3100
Fax:	(08) 8260 5210
Email:	adelaide@mcmervices.com.au
Website:	www.mcmervices.com.au
Company Chairman:	John H Heard
Company Directors:	David John McMahon Andrew Glen McMahon
Company Secretary:	Andrew Glen McMahon
Bank:	Commonwealth Bank of Australia



Insurances

McMahon Services has purchased the most all-embracing insurance cover available in Australia to not only protect ourselves as Contractors, but also where required, to transmit to our clients the benefits that we have secured by incorporating the client's interests under the policies.

Insurance Class	Liability Limit
Combined General Liability (Excluding Asbestos)	\$50,000,000
Combined General Liability (Asbestos Removal & Asbestos Disease)	\$25,000,000
Annual Contract Works	\$20,000,000
Motor Vehicle	\$30,000,000
Contractor's Plant & Equipment	Various
Mobile Plant & Equipment	Various
Marine Transit Insurance	\$1,500,000
Workers Compensation - South Australia	Varies - dependent on claim
Workers Compensation - Queensland	Varies - dependent on claim
Workers Compensation - Northern Territory	As per NT Workers Compensation Act
Workers Compensation - Western Australia	\$50,000,000
Workers Compensation - ACT	As per ACT Workers Compensation Act
Workers Compensation - NSW	As per NSW Workers Compensation Act
Professional Indemnity	\$20,000,000

LICENCES & CERTIFICATION

Compliance is integral to our business, so we invest heavily in licences and certification, and strive to exceed industry standards.

Federal Safety Accreditation

We were the first multi-disciplinary construction services company in Australia to achieve Federal Safety Accreditation (2009) - Accreditation No. 0142

National Accreditation

- ▶ SAI Global Quality Management Systems AS/NZS ISO 9001:2008
- ▶ SAI Global Occupational Health and Safety Management Systems AS/NZS 4801:2001
- ▶ SAI Global Environmental Management Systems AS/NZS ISO 14001:2004
- ▶ Demolition and asbestos removal licences for every state in Australia

South Australia

- ▶ Unlimited Asbestos Removal Licence - Licence Holder No. 72712
- ▶ Building Work Contractor - Licence No. BLD 174717
- ▶ Electrical Work Contractor - Licence No. PGE 208960
- ▶ DPTI Category 4 certification for carpentry
- ▶ DPTI Category 4 certification for civil, demolition and asbestos removal
- ▶ DPTI Category 4 certification for civil
- ▶ DPTI Category 4 certification for roofing, building services and plumbing
- ▶ Environmental Protection Authority (EPA) - Licence No. 13936 - ability to receive and treat Highly Contaminated Waste

Northern Territory

- ▶ Environmental Protection Licence – EPL58-01
- ▶ Accredited contractor - Licence No. D6145480612

Tasmania

- ▶ Asbestos Removalist Licence - Class A - Licence No. 90730814

Victoria

- ▶ Asbestos Removal Licence – Class A - Licence No. H11/04525
- ▶ Building Practitioner (Individual) - Demolisher Unlimited Licence No. BD-U 16842
- ▶ Registered Electrical Contractor - Licence No. 26061

Queensland

- ▶ Electrical Work Contractor - Licence No. 73564
- ▶ Building Services Authority - Licence No. 1084371
- ▶ Licence Class A Asbestos Removal - Licence No. 2301265
- ▶ Licence to perform Demolition Work - Licence No. 230182
- ▶ Certificate of Registration (ERA 5T - Regulated Waste Transport Threshold 2 (b)) - Licence No. ENRE00941109

Western Australia

- ▶ Controlled Waste Carrier - Licence No. T00443
- ▶ Controlled Waste Carrier - Licence No. T00414 (Metalcom)
- ▶ Class 1 Demolition Licence - No. WA D 75
- ▶ Unrestricted Asbestos Licence – WA 140
- ▶ Building Contractor - S1481

New South Wales

- ▶ Contractor Licence No. 152875C
- ▶ Demolition Licence - Licence No. AD200173
- ▶ Friable Asbestos Removal Licence - Licence No. AD211060
- ▶ Environment Protection Licence - Licence No. 7152

ACT

- ▶ Construction Occupation Licence - Asbestos Removal (A Class) - Licence No. 19957369
- ▶ Builder - Class A - Licence No. 20141058
- ▶ Builder - Class B - Licence No. 2015332

AWARDS

Master Builders Association

- ▶ Winner 2016 Award for Excellence in Commercial Refurbishment / Redevelopment over \$5 million - West End Brewery Redevelopment
- ▶ Winner 2008 Award for Excellence in Services - City Central Tower 2 Redevelopment
- ▶ Winner 2005 Award for Excellence in Civil Construction

Civil Contractors Federation

- ▶ Winner 2015 SA CCF Earth Award - Garden Island Landfill Remediation
- ▶ Winner 2013 National CCF Earth Award - Adelaide Oval Redevelopment Detailed Civil and Stormwater Works
- ▶ Winner 2013 SA CCF Earth Award - Adelaide Oval Redevelopment Detailed Civil and Stormwater Works
- ▶ Winner 2012 SA CCF Earth Award - Remediation and Rehabilitation of former SA Water site, Thebarton
- ▶ Winner 2011 National CCF Earth Award - Mead Street Birkenhead High Level Waste Remediation
- ▶ Winner 2011 SA CCF Earth Award - Mead Street Birkenhead High Level Waste Remediation
- ▶ Finalist 2010 SA CCF Earth Award - Port Noarlunga Foreshore Redevelopment - Stage 1
- ▶ Winner 2007 SA CCF Earth Award - City Central Tower 2 Redevelopment
- ▶ Winner 2006 National CCF Earth Award - Port Adelaide Waterfront Redevelopment Project
- ▶ Winner 2004 SA CCF Earth Award - Liberty Towers Development - Glenelg
- ▶ Winner 2004 SA CCF Earth Award - Penrice Soda Products Bioremediation of TPH Impacted Soils
- ▶ Winner 2000 SA CCF Earth Award - Islington Workshop Rehabilitation

BANKSIA

- ▶ 2004 / 2005 Good Business Environment Awards Winner of The Premier's Award for Business Environmental Responsibility and Leadership - Penrice Soda Products Bioremediation of TPH Impacted Soils

SafeworkSA Awards

- ▶ Winner 2012 Best Individual Contribution to Workplace Health and Safety - OHS Manager or Person with OHS Responsibility

Demolition and Recycling International

- ▶ 2015 Demolition and Recycling International Magazine's Top 100 Listing - POSITION 14
- ▶ 2014 Demolition and Recycling International Magazine's Top 100 Listing - POSITION 11
- ▶ 2013 Demolition and Recycling International Magazine's Top 100 Listing - POSITION 10
- ▶ 2012 Demolition and Recycling International Magazine's Top 100 Listing - POSITION: 6
- ▶ 2011 Demolition and Recycling International Magazine's Top 100 Listing - POSITION: 14
- ▶ 2010 Demolition and Recycling International Magazine's Top 100 Listing - POSITION: 17
- ▶ 2009 Demolition and Recycling International Magazine's Top 100 Listing - POSITION: 21
- ▶ 2008 Demolition and Recycling International Magazine's Top 100 Listing - POSITION: 20
- ▶ 2007 Demolition and Recycling International Magazine's Top 100 Listing - POSITION: 19

Economic Development Australia

- ▶ 2011 National Economic Development Australia Awards for Excellence - 'Highly Commended' - Indigenous Economic Development Award - Intract - Indigenous Contractors

Advantage SA Regional Awards

- ▶ 2012 Yorke and Mid North Finalist for Large Business
- ▶ Southern Flinders Business Employment and Training Awards
- ▶ Winner 2012 Outstanding Business Achievement
- ▶ Winner 2012 Outstanding Staff Training and Development (More than 10 FTE)

Planning Institute of Australia (SA Branch)

- ▶ 2012 From Plan to Place Award - Christies Beach to Port Noarlunga Foreshore Revitalisation

CONTACT US

Adelaide

26 Duncan Road, Dry Creek SA 5094
PO Box 542, Enfield Plaza SA 5085
T (08) 8203 3100 | F (08) 8260 5210
E adelaide@mcmsservices.com.au

Port Pirie

30 Ellen Street, Port Pirie SA 5540
PO Box 143 Port Pirie SA 5540
T (08) 8633 5400 | F (08) 8633 4441
E ptpirie@mcmsservices.com.au

Whyalla

350 Broadbent Terrace, Whyalla SA 5600
PO Box 54, Whyalla SA 5600
T (08) 8644 4400 | F (08) 8645 1762
E whyalla@mcmsservices.com.au

Darwin

41 Bishop Street, Woolner NT 0800
PO Box 36546, Winnellie NT 0821
T (08) 8930 2500 | F (08) 8942 2782
E darwin@mcmsservices.com.au

Melbourne

1 Cawley Road, Brooklyn VIC 3012
T (03) 9351 7800
E melbourne@mcmsservices.com.au

Alice Springs

Unit 1/30 Elders Street, Alice Springs NT 0870
PO Box 4545, Alice Springs NT 0870
T 0417 820 221
E alicesprings@mcmsservices.com.au

Katherine

33 Crawford Street, Katherine East NT 0850
T (08) 8930 2500
E darwin@mcmsservices.com.au

Brisbane

14/1440 New Cleveland Road, Chandler QLD 4155
PO Box 155, Capalaba QLD 4157
T (07) 3634 4300 | F (07) 3245 1685
E brisbane@mcmsservices.com.au

Gladstone

PO Box 8179, South Gladstone QLD 4680
T (07) 4977 7700
E gladstone@mcmsservices.com.au

Perth

Unit 11/524 Abernethy Road, Kewdale WA 6105
PO Box 80, Welshpool WA 6986
T (08) 6350 7000 | F (08) 6350 1169
E perth@mcmsservices.com.au

Karratha

Lot 104 Exploration Drive,
Gap Ridge Karratha WA 6714
PO Box 903, Karratha WA 6714
T (08) 9183 9500 | F (08) 9185 2543
E karratha@mcmsservices.com.au

Sydney

86 Bourke Road, Alexandria NSW 2015
PO Box 7064 Alexandria Business Hub, Alexandria NSW 2015
T (02) 9307 9900
E sydney@mcmsservices.com.au

Townsville

68 Crocodile Crescent, Mount Saint John
Townsville, QLD
PO Box 544, Garbutt East QLD 4814
T (07) 4774 3056
E townsville@mcmsservices.com.au

www.mcmsservices.com.au