

McMAHON
SERVICES

THE WORKS

Autumn 2012

**Special
Feature:
Woomera in
the spotlight**

**Transporting
giants is
never easy**

**Rapid
response
takes us north**

**High
Expectations**

**McMahon
Services
remains cool
under pressure**



THE W



WORKS

WHAT'S INSIDE

IN FULL SWING	2
INTRACT-ING NEW OPPORTUNITIES	3
WE ARE READY TO RUMBLE	4
RAPID RESPONSE TAKES US NORTH	6
FEATURE PROJECT: WOOMERA IN THE SPOTLIGHT	8
YARD DUTY	10
TRANSPORTING GIANTS IS NEVER EASY	12
MCMAHON SERVICES REMAINS COOL UNDER PRESSURE	13
A-TISSUE, A-TISSUE, THEY ALL FALL DOWN	14
URBAN FOREST FACELIFT FOR HISTORIC SITE	15
HIGH EXPECTATIONS	16
INNOVATION - REVOLUTIONARY RETERRA	18
CARRAPATEENA UPDATE - A GOLDEN GATEWAY	19
TERRITORY ALLIANCE UPDATE	20
CHIMNEY CHALLENGE	22
MO BROS	24
NEW ROOF FOR FIRE DAMAGED BOWLING CLUB	24
PUTTING OUR GREEN FOOT FORWARD	25
STRENGTH IN NUMBERS	25
EXCITING NEW CHALLENGES	26



There was no slowing down for McMahon Services over the Christmas season, with the company in full swing as the new year approached.

Two days after Christmas we received an urgent phone call to assist with a clean-up of a freight train derailment in the Northern Territory. Through our

emergency response effort, personnel and equipment were mobilised to site within days and the team is still working hard despite the unpredictable weather conditions and time away from family. Their efforts underpin our can-do attitude and willingness to go above and beyond.

The beginning of 2012 has been very busy, welcoming many new milestones. We are proud to announce that our business now effectively operates with a zero emissions profile. We are leading with our green foot and demonstrating our

commitment to reducing our carbon footprint and offsetting our unavoidable emissions.

Intract Indigenous Contractors has thrived in its first year of operation and through its on-going success has launched a new division, Intract Hire. Our aim is that the new venture will provide further opportunities for Indigenous people to gain skills training and will open more doors for securing long-term employment.

We are also excited to reveal that McMahon Services are now the proud Premier Partner of Territory Thunder – the inspiring Indigenous Aussie

rules football team from the Northern Territory. We look forward to kicking goals with the boys, promoting the participation of young Indigenous people in sport.

McMahon Services has hit the ground running this year and as momentum continues to build the team is excited for the challenges ahead.

David McMahon
Managing Director



INTRACT-ING NEW OPPORTUNITIES

Within its first 12 months of operation Intract Indigenous Contractors has flourished.

Through its success, the booming business has expanded to create a new division, Intract Hire – providing remote area rental solutions for the mining and civil construction industries across South Australia.

Driven by our dedicated Indigenous labour force, Intract Hire covers both 'wet' and 'dry' plant and equipment hire, including operators and fuel. Intract Hire offers civil

construction equipment from excavators, loaders and rollers through to graders, dozers and water trucks.

All plant and equipment is modified to mine site specifications and is supported by 24/7 maintenance support services.

Modular accommodation is also available, including portable lunchrooms, sleeping quarters, kitchen facilities and ablution blocks and all plumbing and electrical work.

Intract Hire is further supported by Intract Indigenous Contractors, capable of delivering civil construction and general building works such as road building and maintenance, large-scale earthworks, land rehabilitation, concrete crushing and screening, demolition, roofing and plumbing, project management and general labour.

Intract will continue to champion Indigenous training and long-term employment to help inspire confidence in Aboriginal communities across South Australia. The new Intract Hire division will provide further opportunities for Indigenous people to gain new skills and actively work within one of the State's fastest growing industries.





To kickstart 2012 and the start of a new football season, McMahon Services are thrilled to announce that we are the new Premier Partners of the Northern Territory Football Club.

Formed in 2008 as part of the NEAFL, NT Thunder set out to inspire young Indigenous people to participate in sport to improve education, employment, training, health, leadership and wellbeing in local Indigenous communities across the Northern Territory.

McMahon Services is proud to partner with the NT Thunder, who not only embrace the spirit of football, but also help players secure skills training

and long-term employment as part of their participation with the club.

To further drive this objective, McMahon Services and the NT Thunder will work together to create a jobs and training network, providing skills training, employment opportunities, personal development programs and mentoring for players.

Over the past three seasons the NT Thunder has built strong relationships with local communities, through actively participating in community events, playing home matches in both Darwin and Alice Springs and delivering football themed healthy lifestyle clinics

in schools located in urban and remote areas.

McMahon Services shares the NT Thunder vision, with a proud history of working with Indigenous communities and securing long-term employment and training opportunities for Indigenous people.

We are ready to kick goals on and off the field, working closely with the club and local communities over the next three years to deliver our shared objectives and of course, to defend the premiership title!





RAPID RESPONSE TAKES US NORTH

McMahon Services received an urgent phone call on New Years Eve to rapidly assist with a difficult clean up of a freight train derailment in the Northern Territory.

The train derailed on Tuesday 27 December 40 kilometres north of Katherine due to flood waters on the Edith River Rail Bridge from heavy rainfall associated with Cyclone Grant.

Our National Operations Manager met with Genesee & Wyoming Australia representatives on-site New Years day to assess the damage and develop an action plan.

Appointed as Head Project Manager, we called in three senior staff members from annual leave who arrived on-site the next day, ready to take

charge of the emergency response effort.

Wasting no time, plant and equipment was mobilised to site from our Darwin and Adelaide operations the same day, site accommodation was established and the mammoth clean up commenced.

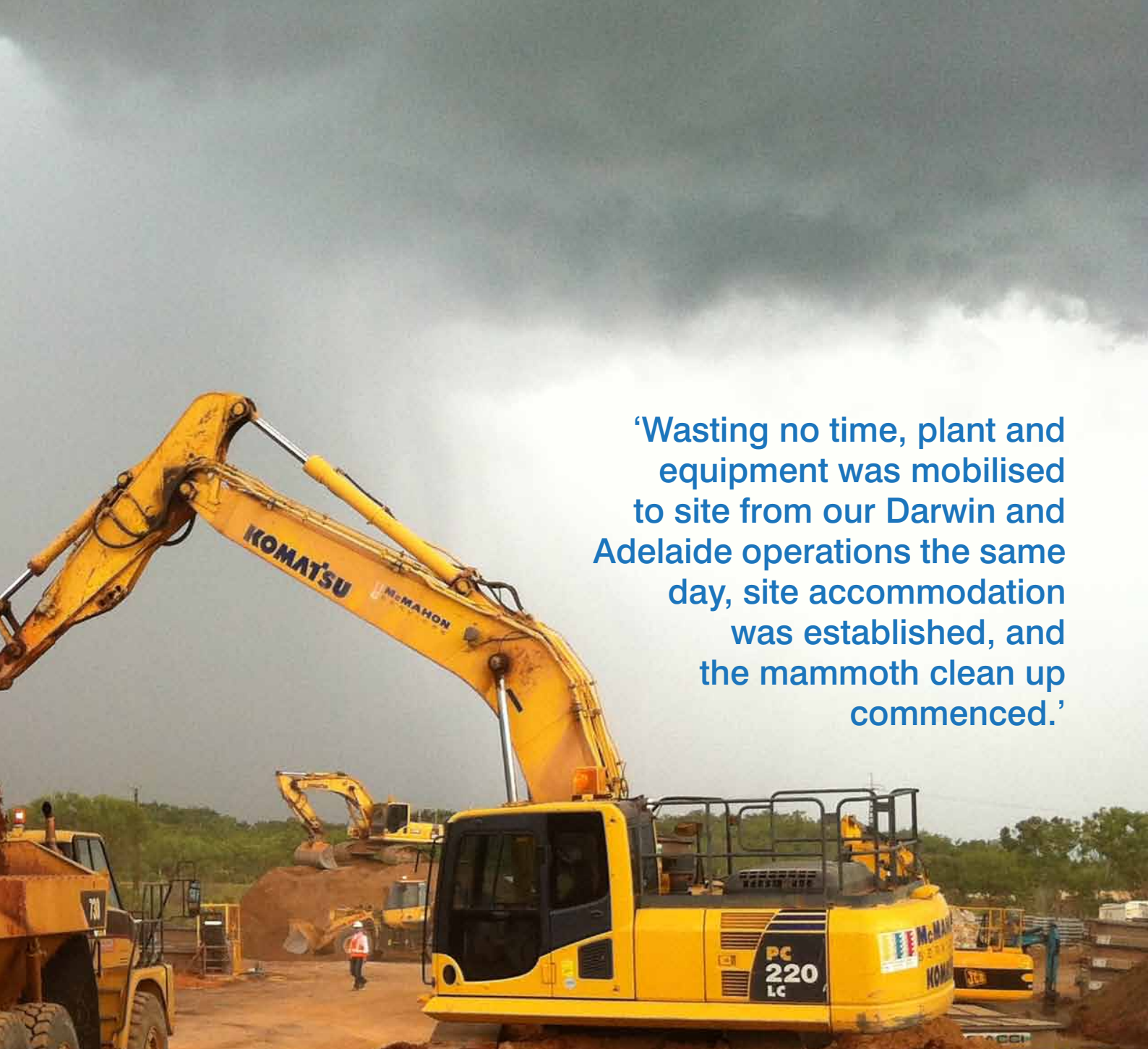
With over 30 personnel on-site across four different contractors, the first task was to recover the derailed train in order for repairs to the Rail Bridge and abutments to commence.

This involved the removal of rail carriages from the flowing river, copper concentrate for re-packaging, while rail carriages and debris were still sitting on the bridge with the only access via a 250 tonne mobile crane.

The project also called for the clean up of a diesel spill, which had leaked from the three locomotives, stockpiling around 1500 tonnes of diesel contaminated soil, which is to be remediated on-site during the dry. This included the following:

- ▶ Preparation of a stockpile area including bunding and 500um HDPE lining
- ▶ Gaining a licence from NRETAS to stockpile and remediate the contaminated material on-site and obtaining approval from Traditional land owners
- ▶ Engage Environmental Consultant to oversee the clean up
- ▶ Removal of the contaminated material and transport to the stockpile area while satisfying the Traditional owners that culturally sensitive areas were not disturbed
- ▶ Undertaking validation sampling to ensure that the site was no longer contaminated
- ▶ Covering of the contaminated stockpile with 500um HDPE to ensure that there is no contaminated water run off during future rainfall until the dry, when remediation can commence
- ▶ Developing a remediation plan for approval by the client and NRETAS
- ▶ On-going monitoring and sampling of the site as per the EPL





‘Wasting no time, plant and equipment was mobilised to site from our Darwin and Adelaide operations the same day, site accommodation was established, and the mammoth clean up commenced.’

The next challenging task was to rebuild approximately 200 metres of track formation leading up to the bridge and the placement of rock protection around the southern bridge abutment, including:

- ▶ Removal of all unsuitable material down to bedrock
- ▶ Importation of approx. 60,000 tonnes of select fill material
- ▶ Importation of approx. 5,000 tonnes of selected rock protection

- ▶ Placement of approx. 100 cubic metres of concrete to lock in the base
- ▶ Working a 24/7 shift to ensure that the rail services were restored in the shortest time possible

McMahon Services was also responsible for the massive clean up of debris and recovering containers found up to three kilometres down the Edith River, wrapped around bridge pylons and the road bridge.

Further work is still needed however, once the waters have receded and better access is available.

We faced some difficult challenges throughout the project, from the stability of the bridge to operating machinery in deep floodwaters, remoteness of the site and mobilising plant and equipment through flood effected areas. Workers were also confronted by continual 40 degree heat and 100% humidity.



SPECIAL FEATURE: WOOMERA IN THE SPOTLIGHT

Once a well-known base for the Australian defence forces, the remote South Australian town of Woomera has significantly reduced in size over recent years.

With a population of about 5,000 at its peak, Woomera is now home to just over 200 people and much of the existing infrastructure is no longer needed and has fallen into disrepair.

McMahon Services has a long history of working in the region, commencing our first project back in 1999. This involved Stage 1 & 2 works for the refurbishment of infrastructure on Range 'E' in the Woomera Prohibited Area.

Major works included; rebuilding taxiways on the air strip, removing asbestos and refurbishing the existing control tower, installation of an emergency generator, replacement of existing fencing, construction of a new fuel farm, installation of sprinkler and fire detection systems and the construction of new bitumen roads.

Within the Woomera Village, the team demolished the existing swimming pool and also installed several new fire detection systems in the shopping centre complex and accommodation blocks. The Port Augusta to Woomera Pipeline was also on the agenda, with repairs carried out to replace the pipe supports, as well as the installation of new concrete culverts on the Range 'E' pipe line and earth embankments.

This mammoth project also saw the refurbishment of the Range 'E' I.B. Building, construction of new roads around the shopping centre, upgrade of the existing sewerage treatment plant, removing and replacing sections of the bitumen runway at the Aerodrome, along with demolition works and the installation of a new toilet block, diesel pump and several fire mains.

McMahon Services has also built a strong relationship with the Department of Defence. We have established ourselves as a trusted and reliable contractor, delivering several high risk projects with the highest possible safety standards.

In 2002, we were engaged to complete a Defence Explosives Trial in Woomera. The purpose of 'Woomera's Big Bang' was to test the results of a 27 tonne explosion and how it impacted on various buildings. British Defence financed the project and Singapore, Holland and Norway all participated in the trial.

The team constructed four residual buildings, three Singaporean structures and two commercial building sites with a total of six commercial buildings, one Norwegian house and a Baltic Pine staircase, along with command and control structures, a partial field hospital, modular/tented accommodation and observation towers.



The site of the explosion was then covered with multiple sensors and 30 cameras located in protective houses, to measure and record the explosion.

McMahon Services has also undertaken other significant projects in the area including; Defence Trial 868, Defence Trial ADF 873, and the BAE Systems contracts for asbestos removal in various buildings, as well as the removal and replacement of handrails in the I.B. Building.



Given our proud history of working in the region, we were most recently awarded the contract to remove all the derelict structures around the town, calling on extensive site remediation along the way.

Starting in May 2011, the project required eight concrete and steel water tanks to be decommissioned along the Port Augusta to Woomera pipeline, as well as the demolition of the town hall and four houses within the township.

Additionally, all of the structures at the former defence base at Nurrunga were removed including 12,500 tonnes of concrete from the site.

Some of the slabs had asbestos coatings, which needed to be removed before being transported back to Woomera for crushing. More than 14,000 tonnes of rubble was then used to backfill the voids.

The steel removed from the various sites was sent back to Port Augusta and Adelaide for recycling and 24,000 tonnes of concrete was pulverised and crushed for use in roads by the Department of Defence.

One job of particular concern was the removal of old fuel tanks, which had the potential to contaminate the surrounding earth. The soil was tested prior to removing the tanks to ensure it was safe and then the voids were filled.

The diversity of this project also called for a wide variety of plant and equipment. Utilising our modern company owned fleet, a PC 450 Excavator and two PC 220 excavators were in frequent use, while two semi-tippers were constantly carting material to the crushing plant and back loading the voids with rubble.

Working in the Woomera area over the past 12 years has enabled us to refine our remote work expertise and build on our diverse project experience.

YARD DUTY

The yard at McMahon Services' Head Office in Dry Creek Adelaide has undergone an enormous 12 month transformation.

Led by Project Manager, Jo Sattin, the team began the yard extension with a massive clean up including 400 tonnes of steel, 1000 tonnes of sand and rubble and over 100 tonnes of salvaged items.

Preparation for the newly constructed 70 x 22 metre shed followed, including filling the block to the level required and compacting the soil, ready to lay stormwater and other services including electrical, fire and data.

Two new fences were also built around the property totalling 192 metres, along with retaining walls.

Sister company Ballestrin were called in to undertake concrete construction works with over \$1 million of Green Star Concrete poured within a five week period. The project called for a total of 17 concrete aprons, averaging 660 square metres, including 14 slabs for the outside yard and three slabs inside the new shed.

Other works included services installation, bitumen behind the shed to house eight 50,000 litre rain water tanks, a treatment system for the wash bay, installation of a

custom built weigh bridge measuring 5 x 6 metres with a load capacity of 90 tonnes and general maintenance. All work was completed while the yard was still in full operation, a testament to the project team.

The team from McMahon Services worked collaboratively with Intract Indigenous Contractors, who played a large part in leading the installation of firemains consisting of 212 metres of piping, power and stormwater.

Works are also well underway on the new Head Office refurbishment. The contemporary design will include increased office space, boardroom and bar, kitchen facilities, state-of-the-art video conferencing functionality and large open planned car park.

The regional office in Port Pirie is also undergoing a major facelift including a series of interior and exterior renovations to the main building. Inside, a glass partition office has been built along with a new kitchen and archive room. The outside received new CFC cladding, roofing and guttering, along with a fresh coat of paint.

It's all systems go in South Australia and we are ready to take on the new year with a fresh look.





‘The project called for a total of 17 concrete aprons, averaging 660 square metres, including 14 slabs for the outside yard and three slabs inside the new shed.’



TRANSPORTING GIANTS IS NEVER EASY

No one ever said relocating 100 dump trucks from Port Augusta to Olympic Dam was going to be easy but, when the trucks in question are some of the largest in the world, it becomes an even more challenging task.

With the trucks weighing up to 700 tonnes fully loaded, the shoulder of the Sturt Highway needed to be extended by one metre on either side.

McMahon Services was brought on board to assist with the removal and crushing of more than 780,000 tonnes of roadside material, ready for the expansion.

Having started with a 30 tonne excavator to rip the rock, it soon became clear that a more heavy-duty machine was needed. The D10 bulldozer stepped up to the challenge and began steadily pulling out the rock ready for its first stage of processing through the jaw crusher.

The oversized rock was then passed through the impact crusher for secondary crushing and to bring it within the DTEI specification for road material of 20 millimetres. All material was

then passed through the screen plant and sampled and graded to ensure it met the requirements.

It was vital for this project to progress in-line with the scheduled program in order to avoid significant costs that would be incurred if the dump trucks were delayed.

In addition to the tight time, frames a further consideration for this project was its location on Aboriginal heritage land.

For the work to proceed permits were needed and workers had to display an on-going awareness of the culturally sensitive nature of the land. An Aboriginal representative remained on-site for the duration of the works, ensuring the team worked within the clearly marked boundary lines.

Having processed 50,000 tonnes of rock at the time of writing, the project is due to be completed in April 2012.



MCMAHON SERVICES REMAINS COOL UNDER PRESSURE



Last year, McMahon Services set a new best practice standard for the removal of asbestos lagging in extreme heat at Incitec Pivot's Gibson Island ammonia plant near Brisbane.

Off the back of this landmark project, we were awarded the contract to perform a similar role at the world's largest alumina refinery located in Gladstone.

The three year project, which started in January this year, will see McMahon Services maintain, remove and replace the asbestos insulation and sheet metal cladding on more than 20 kilometres of pipe-work and seven storey boilers – all while the plant continues to operate.

"We have a full time team of 20 working on this project, which will increase to 50 or 60 people when the refinery goes into shutdown," said Queensland State Manager, Scott Trenerry.

"This is a highly technical project and requires everyone involved to be extremely skilled.

"The team is working with pipes that can exceed 400 degrees celsius so safety is paramount."

The team is working with techniques that were developed by McMahon Services for the Incitec Pivot project and sees them looking more like astronauts than asbestos technicians.

"We developed cool suits, similar to those worn by racing car drivers, that pump cool water and air around the worker's body," said Scott.

"But where racing drivers have a small cool pack on their hip that feeds the cold water, we use large retrofitted freezers connected by a heatproof pipe to the suit, which pumps a constant stream of cool air,"

"On top of that, the guys wear a Tybek asbestos suit covered by an aluminised furnaceman's suit made of silver foil and resistant to 1,000 degrees Celsius" said Scott.

The complexities of the project call for a high level of communication and cooperation with Queensland Alumina Limited and other contractors on-site.

"The plant itself has about 1,500 employees and 900 contractors, so there are

lots of different trades being performed at one time," Scott said.

"The cost implication of running over time on tasks is huge, making it essential that we fit seamlessly into the day-to-day running of the plant."

The team not only has to focus on the tasks at hand, but also the challenging conditions of the site.

"We are working within an extremely high risk environment," said Scott.

"It is a heavy manufacturing plant that uses a lot of caustic in the refinery process, making it critical that we work with an increased awareness of our surroundings."

"This is a fantastic project to be involved in," added Scott.

"In securing this contract, McMahon Services has shown that by being innovative and developing new operation methods, we can deliver real value back to our clients."

A-TISSUE, A-TISSUE, THEY ALL FALL DOWN

“Project Marvel” at the Kimberly-Clark Millicent Mill in South Australia saw the demolition of three large tissue machine buildings, T1, T2 and T3, along with the North Chip Storage Silo.

The deconstruction of the large concrete silo proved to be a complex task, with newly built structures surrounding the storage facility limiting the flexibility of the work space.

The project called for scaffolds to bridge existing structures including live transformers and other adjacent buildings that were still in active use.

In line with SafeWork SA's requirements for all structures over six metres, a full risk assessment and work methodology was completed prior to work commencing.

The renowned company owned Ultra High Reach Demolition Excavator, with

a 45 metre reach capability, enabled the structures to be deconstructed from the top down, without requiring personnel to work at heights.

The Excavator was used in tandem with the PC450 LaBounty shear and a PC 300 excavator with a grapple and hammer, efficiently bringing down the structures with minimal risk to the surrounding environment.

A three-way tipper was then used to transport around 1,400 tonnes of deconstructed materials from Millicent to Adelaide, with around 120 tonnes of material transported per week for processing.

The project is still underway with the demolition team working hard to ensure the site is returned to its original state.



URBAN FOREST FACELIFT FOR HISTORIC SITE

The historic SA Water site at Thebarton has served as a depot and office space since 1879. Ready for a revamp, McMahon Services was contracted to demolish all existing structures and remediate the former Depot, with the site earmarked for the development of an 'Urban Forest'.

The State Government's plan was to create a contemporary woodland park setting using Indigenous species and sustainable landscape principles. The parklands will serve as a new community space where the public can enjoy a variety of amenities all powered by renewable energy, through solar lighting and a wind generator and all water will be collected and re-used on-site.

For McMahon Services, initial works included palm tree removal and relocation and exclusion zones installed around retained trees. Special care was taken to ensure stored materials, vehicles, equipment and rubbish were kept away from the clearly marked exclusion zones to ensure the trees were protected.

Once the demolition works were complete, two repositories totalling 22,000m³ and 8,000m³ were excavated to stockpile and then the team began a staged excavation of contaminated material to backfill the repositories. The clean material excavated from the repositories was then placed on top of the contaminated material, creating a landscaped mound.

Following the remediation of the site, the civil scope also included the installation of stormwater drainage and management infrastructure including concrete pipes and headwalls, earth swales and retention basins. Oversize rock was won by screening existing site material and recycled by placing into the newly constructed swales and the retention basins.

Effective environmental management was critical, with the site in close proximity to a local school, busy intersection, and local businesses and residents. With more than 1,200 truck movements off-site, McMahon Services took every measure to minimise drag-outs and dust pollution to the surrounding community and disruption to traffic flows.

After preparing the site, landscaping works began on the construction of rubble walking trails, top soiling on repository mounds and tree drip zones and creating gabion seating structures.

The project will also include a new bikeway that links the Westside Bikeway with the River Torrens Linear Park and when used with Coast Park path, will create a 20 kilometre loop around the CBD.

The park is due to open mid-2013.



HIGH EXPECTATIONS

The Asbestos and Roofing division at McMahon Services has faced its toughest challenge yet, replacing a 14,500 square metre damaged asbestos Deep 6 roof on CSPB's Bunbury fertiliser storage shed in Western Australia.

The oversized roof needed to be replaced with Colorbond Ultra double sided Spandec to make it more resilient to the fertilisers housed inside the shed, and the rusted steel gutters replaced with 316 new stainless steel gutters.

Project Manager Robert Tester said the extent of the asbestos and the sheer size of the roof required careful planning, expertise and specialist equipment.

"We used all in-house personnel and plant on the job including six highly trained asbestos technicians, six

roofing contractors and a crane driver," said Robert.

"We also transported a 250 tonne crane and a 135 foot boom from South Australia to Bunbury on a low loader to get the job done."

With any team working at heights, safety is always the number one priority.

"In addition to the static line across the roof, we added a wire-mesh system on top of the asbestos," said Robert.

"With the roof in such a state of disrepair, we could not guarantee it would hold while the guys were working up there, so we developed the mesh system to give them better security and stability."

To increase efficiency, we also developed a system of skips on the roof to collect the asbestos as it was removed,

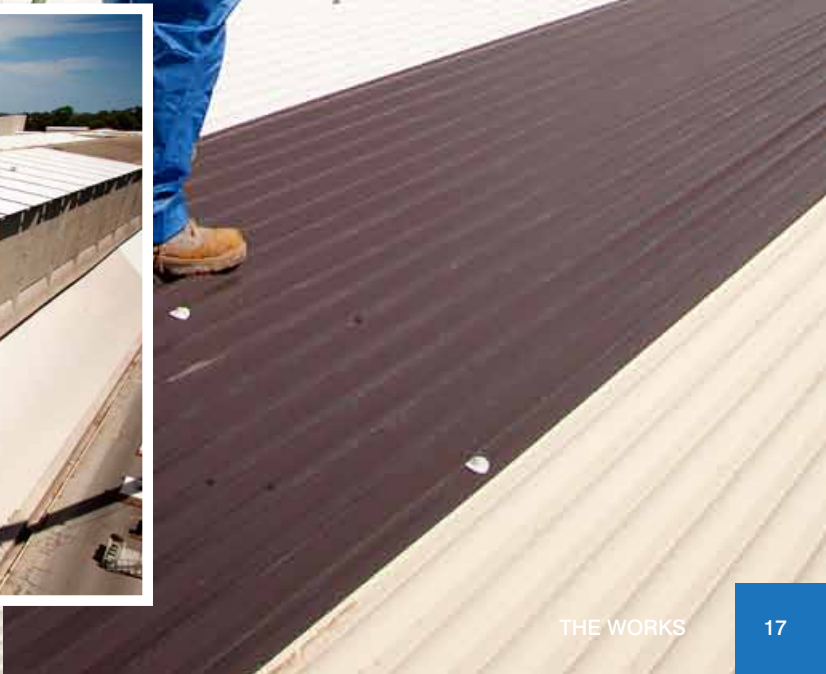
ready for it to be safely transported down to ground level and into the lined bins for disposal.

The five month project was completed within the assigned timeframe, despite harsh weather conditions causing some delays.

"We had one week of high winds and rain – which obviously makes working at heights problematic," said Robert.

"We will not send guys onto roofs – or any project at height – if the wind is above nine knots, so the team was essentially grounded for one week. But we were able to work efficiently to make up for the lost time."





McMahon Services has introduced one of only a handful of soil blending machines in Australia, the Komatsu BZ210-1 RETERRA G-Mode mobile soil recycler, to our extensive fleet of company owned plant and equipment.

This revolutionary piece of machinery ensures fast and accurate blending of appropriate reagents to both neutralise and stabilise contaminated soils.

The G-Mode model offers a dramatically improved and increased workload capability and soil improvement efficiency and most importantly, has set a new benchmark for treating acid sulphate soils.

"Traditional methods of treating soils was typically done by adding aglime to neutralise the acid sulphate and mixing procedures were commonly carried out by turning over the material with excavators and front end loaders" said Civil Operations Manager, Steve Cugley.

"Now with the new high-tech RETERRA soil conditioner, you can achieve a far more accurate dosing of the lime to the acid sulphate soil at the same time as conducting a thorough mixing process.

"This ultimately makes the overall treatment process more appealing to the EPA, because of the machine's unique ability to mix the correct ratios required.

"The RETERRA is also more beneficial for clients because of the time saved in the production of the materials, which in turn is also more cost effective" he said.

The machine also features environmentally friendly dust-free and noise-free reduction functions, again whilst delivering the same high quality mixing capability as traditional industrial plants.

The RETERRA was put to work in 2011 on the Housing SA Birkenhead remediation project. This challenging project involved the excavation and disposal of 6,000 tonnes of contaminated soil and treatment of 2,000 tonnes of High Level Contaminated Waste soil. We were faced with the management of over 15 different areas with up to four different contamination levels. To treat the waste, the machine was coupled with a chemical fixation reagent.

McMahon Services received a National Civil Contractors Federation Earth Award for the project, setting a new standard for the remediation of sites with high level contaminated waste.



CARRAPATEENA UPDATE - A GOLDEN GATEWAY



Stage 1 of the camp accommodation works for the OZ Minerals' Carrapateena copper-gold mine is now complete.

A team of 20 personnel from the Building Services division, with support from Intract, worked 11 day rosters to deliver the project on time, despite some difficult challenges including unpredictable weather conditions, high volumes of dust and working in a remote location.

Due to an expansion of the site, the doors have opened for McMahon Services to construct an additional 15 accommodation units, bringing the overall total to 112 single ensuite accommodation rooms on-site.

Stage 2 will also include plateau preparation,

installation of transportables and footpaths, along with complete plumbing and electrical works.

The team has developed a strong relationship with OZ Minerals and is now looking forward to completing this next phase, with re-mobilisation expected for middle of the year.

McMahon Services has also joined forces with Drummond Solutions to carry out the camp services contract on-site. This involves cooking meals for personnel, camp management, cleaning of transportables and all associated maintenance services.

This unique opportunity has brought a new flavour to McMahon Services, with site personnel voting that our kitchen rules!

A time for reflection

Over the past four years, the Territory Alliance has played an integral role in delivering the Federal Government's Strategic Indigenous Housing and Infrastructure Program across the Northern Territory.

As we reflect on the years gone by, we are reminded of the many milestones achieved by the partnership between McMahon Services, Sitzler Pty Ltd and Laing O'Rourke, in an effort to help bridge the gap between Indigenous disadvantage across 72 Aboriginal communities.

By early 2010 the Territory Alliance was awarded a lion's share of the project, with six work packages totalling approximately \$600 million of housing and infrastructure works.

The packages included the Tiwi Islands; Maningrida; Galiwin'ku; Groote Eylandt; Acacia, Belyuen and Gunbalanya and civil works within the \$138 million Alice Springs Transformation Plan.

To date, the dedicated team has completed:

- ▶ 517 new houses and six new subdivisions, including essential infrastructure such as roads, power, water and sewerage across six communities
- ▶ 350 rebuilds
- ▶ 450 refurbishments
- ▶ Extensive civil works in Alice Springs – retrofitting town camps with new connections and realigned roads (now extended to mid-2012)

At the project's peak, the Territory Alliance employed more than 750 workers across the sites and approximately 30 per cent were local Aboriginal workers who were given the opportunity to undertake accredited training.

The Territory Alliance also subcontracted to 918 services and suppliers, with 769 from the Northern Territory and of these companies, 52 were Aboriginal owned.

Becoming part of the community life in remote areas across the Territory was also very important. Territory Alliance workers engaged in local sports teams and festivals and volunteered to help with barge landings, ceremony grounds and community facilities.

The team also offered equipment and help with odd jobs and repairs, cyclone clean-ups, fighting fires, and work experience for local schools.

The Territory Alliance is extremely proud of its achievements so far and the hardworking team that has not only delivered quality housing and opportunities for training and employment, but has also become part of the local communities in which they worked.



‘At the project’s peak, the Territory Alliance employed more than 750 workers’



CHIMNEY CHALLENGE

McMahon Services were contracted to complete the \$3.2million of demolition works for Adelaide's Queen Elizabeth Hospital.

The final phase of this challenging project was the demolition of the boiler house and the associated 40m high chimney stack. The concrete stack was internally lined with masonry fire brick and was situated in a highly confined location, immediately adjacent to an operating research facility and the adjoining boundary residential properties.

Demonstrating innovation at its best, the team tackled the tallest mechanical demolition project ever completed in Australia using the \$3 million Ultra-High Reach Excavator, the latest addition to the McMahon Services company-owned fleet of equipment.

With a reach capable of up to 45m from ground level, the mammoth excavator deconstructed the colossal chimney working around the circumference of the stack from top to bottom.

"The successful demolition of this challenging structure in such a sensitive location is a testament to the capabilities of the demolition team" said Demolition & Operations Manager, Chris Latham.

"An eight week risk assessment, planning and engineering review fully established our methodology which enabled the dedicated team of 8 to complete the deconstruction of the enormous concrete and steel structure within a 10 hour period" he said.

A fully rotating cutter-crusher attachment was fitted to the excavator to carry out the

works. This attachment can process both concrete and steel reinforcement in the one operation. High volume water spray nozzles located on the end of the excavator boom also provided full dust suppression.

"The Ultra High Reach Excavator is ideal for confined suburban projects, as there is less noise and significantly less dust emissions".

"The machine not only brings structures down faster but it is much safer than other methods of demolition" he said.

McMahon Services continues to encourage a strong culture of innovation, continually investing in new technologies and methods to minimise overall costs of operations, and to provide practical approaches that ensure efficient and effective results.





MO BROS

In November last year, 16 employees showcased their finest moustaches to show their support for raising vital funds and awareness for men's health as part of Movember.

With some impressive facial hair, the boys raised a fantastic \$3,533 and played their part in changing the face of men's health in Australia.

The funds raised go towards The Prostate Cancer Foundation of Australia and Beyond Blue, aimed at supporting prostate cancer and depression initiatives across the country.

"This was the first year that McMahon Services participated in Movember. The team had so much fun raising money for

these worthwhile charities and stirring some healthy competition along the way" said Marketing Manager, Ryan Brown.

We look forward to growing our efforts again in 2012 and giving back to a very worthy cause.



NEW ROOF FOR FIRE DAMAGED BOWLING CLUB

The roofing division at McMahon Services were engaged by Complete Building Services to undertake a complete roof replacement after fire damage to the Toorak Burnside Bowling Club.

The entire roof structure was damaged in the blaze, which required replacement of all roof trusses and purlins.

Heritage custom orb colorbond was used to replace all roof cladding, a total of 780m². New flashing, gutters and downpipes were installed, including a custom made heritage gable vent.

Additional works involved the removal of asbestos external wall cladding and asbestos floor tiles.

All work were undertaken whilst the bowls club remained fully operational and regular competitions continued.



BEFORE



PUTTING OUR GREEN FOOT FORWARD



As part of our commitment to sustainable development and to further build on our existing environmental management initiatives, we are now annually monitoring our energy consumption and greenhouse gas emissions.

We are dedicated to reducing our carbon footprint and offsetting our unavoidable emissions using Australian Standard (NCOS 2009) compliant carbon offsets.

Our business now effectively operates with a zero net emissions profile, or also known as 'carbon neutral'.

"Since 2008 we have been actively monitoring and reducing our carbon footprint, and have made a strong commitment to fully offsetting our carbon emissions for the 2010-11 financial year" said Managing Director, David McMahon.

"We recognise that the nature of our business can impact on the environment, so taking the first steps to reducing our carbon footprint is an important milestone, demonstrating our leadership within the industry as a construction services provider" he said.

We will continue to implement green initiatives across our operations in accordance with our ISO14001 certified Environmental Management System and Carbon Neutral commitment to further streamline our resource use and cost efficiencies, reduce our carbon footprint and continue to protect and preserve the environment around us.

McMahon Services will be audited annually by Balance Carbon Pty Ltd.



STRENGTH IN NUMBERS

The Civil division has recently welcomed Estimator Ali Kalkan to the team. While studying an Associate Degree in Engineering at the University of South Australia, Ali was picked up by the SA based company DE-Construct for work experience.

Working initially as a Leading Hand, Ali soon gained the confidence of his clients and was promoted to the role of Estimator/Project Manager. In this position he worked on several significant sites including the Adelaide Convention Centre and the Flinders Centre for Innovation in Cancer (FCIC) car park adjacent to the Flinders Medical Centre.

After two years Ali was in search of new challenges

and began working at McMahon Services. Even within his short amount of time with the company, Ali has already played a large part in securing new projects including; the Cultana Training Facility, Hillview Lutheran Services Development, Whyalla Hospital Regional Cancer Centre Development, and Stage 2 works for the Lyell McEwin Hospital Redevelopment.

Life isn't always about numbers for Ali. A first generation Australian with a Turkish background, food and family are very important, and when he's not enjoying Baklava and coffee, he is watching the F1 and playing tennis.

EXCITING NEW CHALLENGES

Whyalla Hospital Regional Cancer Centre Development – Civil works including; construction and expansion of existing bitumen car park, accommodation pads for new nurses residence, supply and installation of a stormwater system, preparation and pouring of new kerbs, supply and lay of asphalt, along with 4000m² expansion to the hospital building plateau, and a new 4500m² asphalt car park.

OZ Minerals Prominent Hill – 450 room refurbishment at Prominent Hill copper-gold mine including; removal and installation, joinery, blackout blind installation, modifications to existing doors and bathroom upgrade.

Gladstone Alumina – Three year project with Queensland Alumina Ltd, to complete asbestos removal and re-lagging, and on-going maintenance for pipe racks and boilers at the world's largest alumina refinery located in Gladstone.

Burnie Cell Plant Demolition – \$1.1 million demolition works for Virotec/ TasPaper, following on from Stage 1 works completed in 2010 which included the removal of mercury and asbestos and demolition of the Cell House and other TasPaper buildings across Tasmania.

Mulhern Waste Oil Depot Clean up of the damage caused by the massive oil fire at Mulhern's Waste Oil Depot in Adelaide including; fuel tanks, waste drums, truck bodies and burnt out forklifts.

Lyell McEwin Hospital Redevelopment – Stage 2 works including; civil demolition, earthworks, supply and installation of stormwater system, construction of a concrete staircase and block retaining wall, supply and installation of a new bitumen surface for the car park, along with line marking and paving.

Adelaide Oval – Demolition and asbestos removal for the highly anticipated redevelopment of one of the world's most picturesque sporting grounds.

MCPAHON SERVICES

CONTACT US

Adelaide

26 Duncan Road Dry Creek SA 5094
PO Box 542 Enfield Plaza SA 5085
T (08) 8203 3100 | F (08) 8260 5210
E adelaide@mcmsservices.com.au

Port Pirie

30 Ellen Street Port Pirie SA 5540
PO Box 143 Port Pirie SA 5540
T (08) 8633 5400 | F (08) 8633 4441
E ptpirie@mcmsservices.com.au

Brisbane

14/1440 New Cleveland Road Chandler QLD 4155
PO BOX 1555 Capalaba QLD 4157
T (07) 3634 4300 | F (07) 3245 1685
E brisbane@mcmsservices.com.au

Darwin

41 Bishop Street Woolner NT 0800
PO Box 36546 Winnellie NT 0821
T (08) 8930 2500 | F (08) 8942 2782
E darwin@mcmsservices.com.au

Karratha

Corner Coolawanyah & Mardie Roads
Karratha, Western Australia 6714
PO Box 903 Karratha WA 6714
T (08) 9183 9500 | F (08) 9185 2543
E karratha@mcmsservices.com.au

Perth

27 Somersby Road Welshpool WA 6106
E perth@mcmsservices.com.au

www.mcmsservices.com.au