

McMAHON
SERVICES

THE WORKS

Winter 2012

**Moving up
the ranks**

**Unearthing
a gem**

**Adelaide
Oval
Stands
Down**

**All hands
on deck
for ASC**

**Joining
Australia's
largest
construction
project**



THE W



WORKS

WHAT'S INSIDE

WINTER WARM UP	2
MOVING UP THE RANKS	3
UNEARTHING A GEM	4
HIGH ACHIEVERS SHINE AT AWARDS NIGHT	5
COMMUNITY CONNECTION: RIVERLAND PADDLING MARATHON	6
INTRACT DELIVER IN THE NULLARBOR	7
GO WEST	8
MCMAHON SERVICES CHECKS IN	10
ADELAIDE OVAL STANDS DOWN	12
JOINING AUSTRALIA'S LARGEST CONSTRUCTION PROJECT	14
ALL HANDS ON DECK FOR ASC	15
A CLEAN SLATE FOR YOUTH JUSTICE	16
AUSTRALIAN ELECTRICAL COMMISSION FITTED-OUT IN STYLE	17
A PIPELINE TO THE EAST	18
EMERGENCY RESPONSE CLEAN-UP ONLY ONE CALL AWAY	19
CHEMI-COOL DEMOLITION IN TAS	20
THE BIG MOVE ONE CALL AWAY	21
EXCITING NEW CHALLENGES	22



Winter Warm Up

The winter season has seen McMahon Services deliver some of our largest and most impressive projects to date, right across the country.

Securing the highly anticipated Adelaide Oval demolition works sparked excitement, with our highly skilled demolition team bringing down the structures in just 18 days and completing the project with a 98% recycled outcome.

Further South, our demolition team has completed a challenging project in Tasmania, with the clean-up of liquid free mercury along with the deconstruction of a redundant mercury cell plant in Burnie.

It is through projects such as these, that McMahon Services has earned the ranking as the 6th largest demolition contractor in the world as published in the Demolition

& Recycling International publication's highly regarded D&Ri100 listing. With only one other Australian company to feature on the list, McMahon Services continues to set new standards and remains a cut above the rest.

In Northern Queensland, our Civil division has been hard at work on Australia's largest infrastructure project ever, treating 15,000 cubic metres of Acid Sulphate soils in preparation for the construction of an LNG facility on Curtis Island.

Across to the East, McMahon Services has just completed the installation of major pipework at two former ExxonMobil sites in New South Wales for the remediation of subsurface soils and groundwater.

On the back of these projects, we have also secured additional work in NSW for Amcor including demolition, civil and building works.

Winter has also marked a new chapter for McMahon Services, with new offices opening in Perth and Whyalla, along with the relocation to the new Gap Ridge Industrial Estate in Karratha with joint venture business, Metalcom.

Intract Indigenous Contractors is also continuing to deliver results, recently completing detailed remediation works at the local dump in Cook, located in remote South Australia. This project saw the team mobilised to the virtual ghost town for four weeks, securing additional work along the way.

I hope you enjoy reading more about our latest projects and achievements in the Winter 2012 edition of The Works.

David McMahon
Managing Director





McMahon Services is proud to be announced as the Top 6th demolition contractor in the world in the Demolition & Recycling International publication's D&Ri100 listing.

Starting as a small family-run business back in 1990, this is truly a milestone for the company, now positioned an internationally recognised demolition service provider.

Ranked 14 in 2011, McMahon Services continues to go from strength to strength,

completing major demolition projects across the country including –

- ▶ Adelaide Oval Redevelopment (SA)
- ▶ Ex-HMAS Adelaide Scuttling (NSW)
- ▶ TasPaper Decontamination & Demolition (TAS)
- ▶ Demolition of former Harris Scarfe site (SA)
- ▶ BHP Billiton Leinster Thickener Plant Demolition (WA)
- ▶ Queen Elizabeth Hospital Redevelopment (SA)

McMahon Services is also currently undertaking some of the country's largest multi-disciplinary demolition, asbestos removal and remediation projects from the Northern Territory through to New South Wales and Tasmania.

With only one other Australian company to feature in the Top 100, McMahon Services continues to set new standards.

We continue to reinvest profits into our already extensive range of modern and innovative plant and equipment. Our Demolition team now operates three long reach configurations, including the Ultra High Reach, with a reach of up to 45 metres and capable of cutting steel and concrete members up to a metre thick.

UNEARTHING A GEM

The transformation of the historic SA Water Thebarton site from a works and maintenance depot into a rolling landscape earned McMahon Services the 2012 CCF Earth Award for Category 2 (\$1 million - \$5 million).

Earmarked for the development of an 'Urban Forest', McMahon Services was contracted by SA Water and The Department of Planning, Transport & Infrastructure (DPTI) to prepare the site from early demolition works to environmental remediation and rehabilitation.

Expected to open in mid-2013, the contemporary woodland setting will serve as a community parkland on the outskirts of Adelaide's CBD, utilising Indigenous plant species, renewable energy and sustainable landscape principles.

As finalists, Senior Civil/Remediation Project Manager, Gary Fitzpatrick presented to a panel of six who soon discovered the technical complexities of the project.

"The key challenges for McMahon Services included the coordination of 17 excavations with differing types and levels of contaminants, the discovery of latent service trenches across the site and the depot in close proximity to a local school, main arterial roads with high traffic flows, local businesses, a rail line and residential properties" said Gary.

Demonstrating innovation at its best, the project team utilised a land plane equipped with GNSS infrastructure and

Trimble Site Vision Grade Control Software instead of the traditional method of excavator and trucks, to deliver a more timely and accurate excavation and backfill process.

With varying soils, elevations and grades making it difficult for site engineers and machine operators to convert design drawings into a physical reality, the surveying team saw this challenge as an opportunity to implement 3D grade control technology.

"This technology maximised machine productivity with 3D grade control, design information and live cut/fill indication displayed in real time in the cab allowing excavation and grading to be done without the use of timber stakes" said Gary.

The panel was also impressed with McMahon Services' ability to use all contaminated material as backfill for the repositories and all clean material re-used across the site.

Accepting the award in-front of over 350 industry members at the Adelaide Entertainment Centre, McMahon Services was commended for innovation, environmental management and overall industry best practice.

Congratulations to the Civil team and all those involved for making this project such a great success.





HIGH ACHIEVERS SHINE AT AWARDS NIGHT



McMahon Services has been recognised for their outstanding commitment to South Australia's Mid North at the 2012 Southern Flinders Business Employment and Training Awards.

Held at the Port Football Club rooms in Port Pirie, the event attracted a crowd of over 185 people from the business community including the Member for Frome, the Hon Geoff Brock MP and the Major of Port Pirie, Brenton Vanstone.

McMahon Services received one of the highest honours of the night - The Outstanding Business Achievement Award, recognising the company that best demonstrates a commitment to the local community through employment, utilising local resources and suppliers, sponsorship and overall service.

McMahon Services also took home the award for Outstanding Staff Training and Development (More than 10 FTE).

Manager for Northern Areas, Mr. Steve Badman accepted the awards.

"Our success stems from our hard work and the importance we place on the needs of our customers and engaging with the local community" he said.

"Being part of a small town, it is important to become part of the community, and that's exactly what McMahon Services has done.

"We currently employ over 75 people from our Port Pirie office and support BoysTown - a group of disadvantaged youths by engaging them as subcontractors to help further their on the job training.

"McMahon Services also uses local resources and suppliers where possible, sponsors community initiatives, and to further service the region has established a new office in Whyalla" said Steve.

The Port Pirie office has also managed one of the company's largest projects on record - the industrial services contract for the Port Pirie Lead Smelter - a contract held for the past 27 years and accounting for over \$100 million and huge economic benefits to the region.

Furthermore, McMahon Services was recognised for excellence in training and professional development.

"In excess of 2,500 training courses, operator tickets, licences, plant and site inductions have been completed totaling some 14,000 paid training hours" he said.

"McMahon Services places great importance on skills training and encouraging employees to undertake further education to strengthen personal development and the skills and services provided to clients".

McMahon Services also won the Business Excellence Award and Outstanding Staff Training & Development Award back in 2010.

The Southern Flinders Business Employment and Training Awards is a joint initiative of the Regional Development Australia, Port Pirie Chamber of Commerce & Industry, Rotary Club of Port Pirie and South Australia Works.

COMMUNITY CONNECTION: RIVERLAND PADDLING MARATHON

The Riverland Paddling Marathon (RPM) has a proud 25 year history and is the second largest canoe race in Australia.

Over the June long weekend, 160 paddlers took to the water to battle it out for the championship title. Starting on Saturday 9th June at 6.45am and the mercury reading just one degree, the first event was launched, led by veteran paddler Bill Robinson – competing in his 20th Murray 200.

This year, the event saw the introduction of a new safety initiative, focusing on the provision of printed body bibs.

With safety at the forefront of all operations and “We are Safety Focused” as a core company value – McMahon Services proudly sponsored the initiative aimed at improving the identification of paddlers out on the water.

The bibs help to identify paddlers who could be at risk due to injury, hypothermia due to the changing weather conditions or missing up one of the estuaries.

“McMahon Services see safety as serious business, so when we heard about this opportunity, we immediately jumped on board” said Managing Director, David McMahon.

“This was also a fantastic way to become part of a community event that embraces such a great sense of spirit and tradition” said David.

The event finished up with homemade pies and old fashioned steak sandwiches at the Lions Club of Morgan and paddlers boasting it was the most successful RPM to date.



INTRACT DELIVER IN THE NULLARBOR



Half way between the 2691 kilometre journey from Adelaide to Perth, a team of six from Intract Indigenous Contractors mobilised to the virtual ghost town of Cook in South Australia to commence remediation works at the local dump.

Located in the middle of the Nullarbor Plain, the town now only serves as a diesel refuelling facility and provides overnight accommodation for train drivers working on the Trans-Australian Railway from Port Augusta to Kalgoorlie, with a population of just four permanent residents.

This remote project contracted by Genesee & Wyoming Australia (GWA) called for the remediation of an old quarry that had served as the Cook Dump site and sewer pond measuring 50 x 40 metres, along with the reinstatement of a new liner.

GWA was commissioned to prepare a Site Closure Plan for the Cook Dump site and assist in the transfer of ownership of the Cook Railway site to Pacific National.

Living away from home for four weeks, the first step for Intract was to establish temporary site accommodation equipped with sleeping quarters, shower facilities, a kitchen and satellite television.

The first stage of work was then to collect and dispose of rubbish sprawled across the 750 x 9 metre dump, including concrete, steel beams, railway iron, old rain water tanks, gas cylinders, old batteries and general household waste. Approximately 35,000 cubic metres of rubbish was hauled into the dump and covered

with fill material some 10,000 cubic metres.

The team then commenced work on the sewer pond, including disposal of the existing fence, concrete posts and chainmesh. A Komatsu 500 loader removed the tree roots, the old liner and sludge, which was then stockpiled and carted to the dump, totalling some 1200 tonnes, using a truck and trailer.

Once the liner was completely removed, the existing pond base was inspected and areas impacted by the water prepared for remediation. The batters were also reviewed and repaired as required.

After preparation works were complete, the new liner was moved folded out into position. The earth bank was reinstated in layers, compacted and shaped to match the existing bank.

Using a new six tonne excavator, an anchor footing was dug around the top of the earth bank and then the liner unrolled and fixed around the inlet pipe. The liner was then placed into the anchor footing progressively backfilled with site won material and then compacted. To create a new base for the liner, five loads of sand was transported via road train from Ceduna in the State's northwest.

To finish, new and existing fence posts were concreted to mark out the top of the earth bank and gates installed around the perimeter.

Intract was also contracted for additional clean-up work once mobilised to site. This involved the removal of old car bodies, water drums, whitegoods and furniture spread across the town.





Metalcom and McMahons on the move

Back in April, the Pilbara's largest scrap metal recycler Metalcom (a joint venture between McMahon Services and Railroad Transport) and a team from McMahon Services made the big move, relocating to a new yard in the Gap Ridge Industrial Estate in Karratha, Western Australia.

With a total of 108 lots across 260 hectares, Gap Ridge is one of Western Australia's largest regional industrial estates. Metalcom and McMahon Services are the first business' to move into the area, with the new premises measuring 3.4 hectares in total.

The new \$5 million shared office and warehouse is currently under construction

and will feature modern facilities, along with a purpose built weigh bridge and maintenance workshop.

Metalcom has been hard at work, with the last steel shipment completed on the 19th April totalling 6,600 tonnes of steel. The scrap was loaded into bins on semi-trailers and transported to the Dampier MOF (Material Offload Facility), where it was then loaded onto a bulk freighter bound for Asia to be melted and made into car bodies.

Currently, Metalcom has two rail crews in operation; the Inland Crew based at Paraburdoo and the Coastal Crew working close to Karratha. These crews work right across the Pilbara Iron Railways, a contract that has now been extended for another two years.

The teams not only recover obsolete rail line, but also services derailment clean-ups and the recovery of ore cars and non-ferrous materials.

Metalcom has also welcomed two new additions to the fleet at Karratha – the new Komatsu PC 220 Excavator and the impressive Sennebogen 825M - a specialist scrap handling machine fitted with an Orange Peel Grab and magnet and state-of-the-art load sensing hydraulic system.

McMahon Services continues to be a trusted service provider in the North West, focusing on asbestos removal, demolition and construction services, with a strong remote work capability.

The Pilbara region is said to be home to approximately \$129 billion of resource projects currently under development or in the planning stages.



Touch down in Perth

As Western Australia's economy continues to go from strength to strength, McMahon Services has further committed to the West with a new office now based in Perth.

With a presence already established in Karratha, the two offices will strengthen our ability to service the whole State, from Bunbury through to Port Hedland.

Regional Manager, Phil Bubner will act as the driving force in Western Australia, providing a local and centralised management approach for all projects secured within the State.

"These are exciting times, with McMahon Services continuing to grow and the business expanding, and new opportunities on the horizon" said Phil.

"McMahon Services has already undertaken several significant projects in the West and will continue to offer highly specialised services, along with the ability to mobilise to any remote location across the State" he said.

McMahon Services track record boasts significant projects such as the removal of 14,000 square metres of asbestos roof and the reinstatement of a new roof on a fertiliser factory in Bunbury; the removal of asbestos from 30 houses to date as part of the Wickham public housing development; and the high risk decommissioning of a lead processing facility in Esperance.

Scrap it

Metalcom has been contracted by the Roebourne Shire Council to undertake the mammoth task of cleaning up the 7 mile landfill site at Karratha and the Waste Transfer Station located in Wickham.

Roebourne Shire's new Manager of Waste Services has hit the ground running, looking at how the Council can improve the sites.

Operating the largest scrap metal processing facility in the Pilbara region and with the ability to quickly mobilise and begin work, Metalcom was the preferred company to remove all scrap metal from both sites.

Metalcom dispatched their 450 Komatsu shear with rotating head to start processing the steel to export size for it to then be removed to the new premises in the Gap Ridge Estate.

So far Metalcom has removed approximately 240 tonnes of various materials from the 7 mile site. An incredible 120 tonnes of that material has been old washing machines and fridges, which have been baled in Metalcom's yard utilising the company-owned portable Sierra Baler.

The 240 tonnes is only part of the 2,000 tonne total at the 7 mile site. Metalcom has already begun to remove some of the non-ferrous materials from the site, including 20.6 tonnes of batteries, and a large quantity of PVC copper wire next on the agenda. Other metals to be removed include aluminium stainless steel, aluminium copper radiators and air conditioners.

Since commencing work, Metalcom has secured three additional contracts with the Council to remove large quantities of abandoned car bodies from various locations within Karratha.

MCMAHON SERVICES CHECKS IN



McMahon Services has settled into Whyalla, sinking their boots into the \$69.3 million Whyalla Hospital Regional Cancer Centre Redevelopment.

Aimed at improving access to cancer services and outcomes for people in country South Australia, the redevelopment will house a new chemotherapy centre, care facilities, wellness centre, educational and research facilities and more accommodation for patients and staff. The redevelopment will also operate as an integrated service within the South Australian Cancer Clinical Network.

McMahon Services mobilised a permanent team of 25 from Adelaide to Whyalla to carry out the early demolition and civil works.

Starting with the deconstruction of existing accommodation blocks, removal of underground fuel tanks and internal works to the hospital, the demolition crew have been hard at work preparing the site for civil demolition and infrastructure works.

The civil crew then hit the ground running removing trees, backfilling the diesel tanks and removing existing bitumen and kerbing, before constructing a new 50 bay car park to increase the site's capacity.

The next stage of the 18-month project has begun with the construction of four plateaus measuring 250 square metres each for the northern accommodation buildings, along with a 6,000 square metre plateau for the Southern Main Building Extension and the installation of a storm water system and retaining walls.

The Whyalla Hospital Redevelopment project has also opened doors for Indigenous employment, with five workers from McMahon Services' Indigenous contracting division, Intract, operating plant and providing general labour duties.

The project also called for McMahon Services' building division to undertake refurbishment works in the existing hospital including carpentry, ceilings and linings, flooring, painting and joinery.

To further support the \$2.1 million Redevelopment and to better service South Australia's Northern Areas, McMahon Services along with Intract Indigenous Contractors and subsidiary company Ballestrin have joined forces to establish a local office in Whyalla's town centre.

Ballestrin bring to the mix concrete construction and specialist remedial services.

With clients such as OneSteel Whyalla Steelworks, Leighton Contractors, HWE Mining and Linc Engineering, Ballestrin are cementing themselves as strong players in the region.

"By establishing a new office in Whyalla, all three businesses can better service the Northern Areas and the increasing demands of the industrial and mining industries" said Branch Manager, Jonathon Smyth.

"We also have the unique advantage of being able to share resources and have specialist services and labour on call when needed" he said.

The new office will also form a link with the McMahon Services Regional Office based in Port Pirie.



Appointed as Managing Contractor, McMahon Services was engaged by ASC to manage the multifaceted construction of a Temporary Blast and Paint Facility to be used for the construction of three Air Warfare Destroyers for the Royal Australian Navy.

With an original time frame set at 24 weeks, the schedule was reviewed and reduced to 14 weeks, meaning thorough pre-planning was critical to ensure that works could be completed simultaneously to meet the strict deadline.

The project called for the construction of two buildings measuring 29 x 28 metres that would be capable of housing ship blocks in a sealed environment suitable for blast and paint operations, located

on the Common User Facility (CUF); a State Government owned and operated maritime facility at Osborne, South Australia.

The project required the buildings to be completely air tight and adhere to hazard area certification due to the explosive dust and fumes generated from the blast and paint activities.

Project Manager Grahame Coppock and Site Manager Matthew Chancellor were in charge of the coordination of all subcontractors on site, with a total of eight companies, along with personnel from ASC and in-house labourers.

Subcontracting work ranged from scaffolding, electrical, hydraulics and compressed air pipework through to

roofing and cladding, and compressor, ventilation, and blasting equipment suppliers.

The location and limitations of the site presented some unique challenges for the team. With the site located on a secure defence facility, the crew had limited access with restricted zones blocking major areas of land and access points. The central working area was also positioned between two restricted zones and running along the right hand side was a rail line used to transfer the ship blocks and ASC staff continuously managing the transportation of plant and equipment.

Also in the mix was the coordination of ASC and CUF staff conducting weekly

inspections of chemical and gas monitoring and accessing existing underground services, as well as an interface with the existing services.

Putting our team to the test, McMahon Services was primarily responsible for managing the Master Construction Schedule for the entire scope of works, day to day site management and coordination of construction activities, toolbox meetings and managing all design queries.

The temporary facility has a five year lease on site and will be deconstructed at the completion of the project.

ADELAIDE OVAL STANDS DOWN

McMahon Services showed their strength, demolishing the iconic Adelaide Oval Grandstands to ground level and recovering all salvage items in just 18 days.

Once again, McMahon Services has lived up to its reputation delivering the highly accelerated programme milestones whilst recording no LTI's or MTI's and achieving an outstanding 98% recycled outcome.

Engaged by Head Contractor Baulderstone, McMahon Services was responsible for all demolition and salvage works for the \$350 million Adelaide Oval Redevelopment in the heart of Adelaide's CBD.

Baulderstone Project Director, Mr. Paul Philips praised McMahon Services for their efforts.

"Baulderstone have successfully worked with McMahon Services on a number of projects in the past.

"Our strong relationship with McMahon Services and their reputation in the Construction industry, has established a high expectation with regards to Safety Performance and Certainty of Delivery. Chris Latham and his team exceeded our expectations, and have certainly provided

us a solid start in the delivery of this challenging project" he said.

Making way for a new world class stadium, McMahon Services deconstructed the Bradman Stand, Chappel Stands, Clem Hill Stand, Indoor Cricket Centre, SACA offices and various other structures within the precinct.

Through a highly accelerated eight-week program with three simultaneous work fronts, the demolition team deconstructed structures mounting up to 18,000 tonnes of concrete, 1,500 tonnes of bricks, 700 tonnes of steel and 15 tonnes of non-ferrous metals.

The Ultra High Reach Demolition Excavator performed at its peak, deconstructing the 25 metre high Bradman Stand, Indoor Cricket Centre and Chappel Stands.

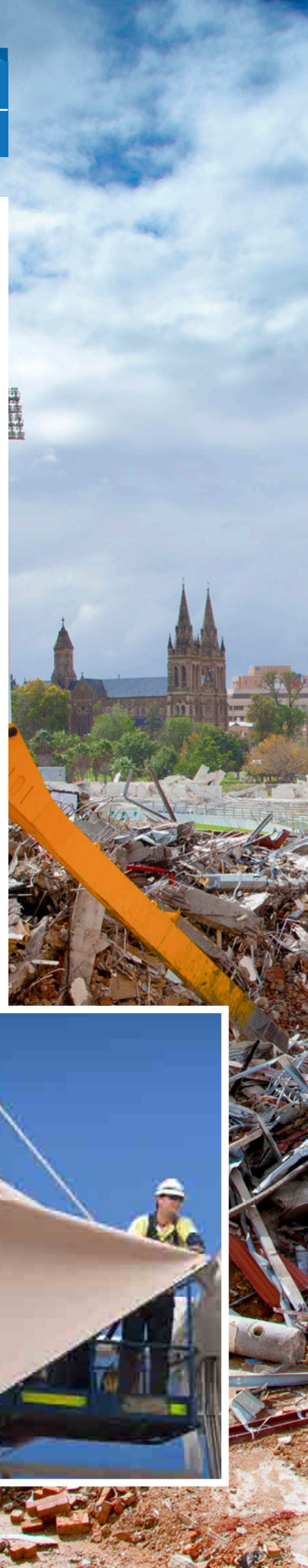
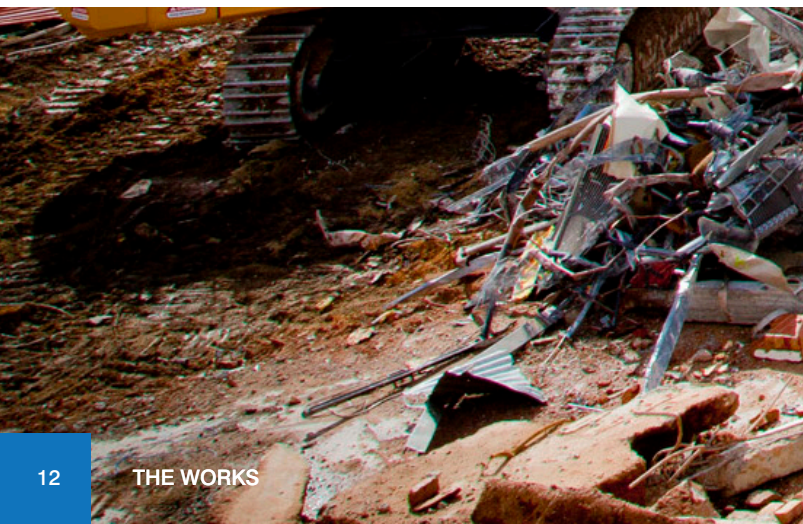
The machine's incredible hydraulic shear brought down the enormous structures in a synchronised performance with a fleet of eight excavators ranging from 22 to 150 tonne. McMahon Services also self-delivered craneage and rigging using the 250 tonne Liebherr, 100 tonne Tadano and 25 tonne Franna cranes.

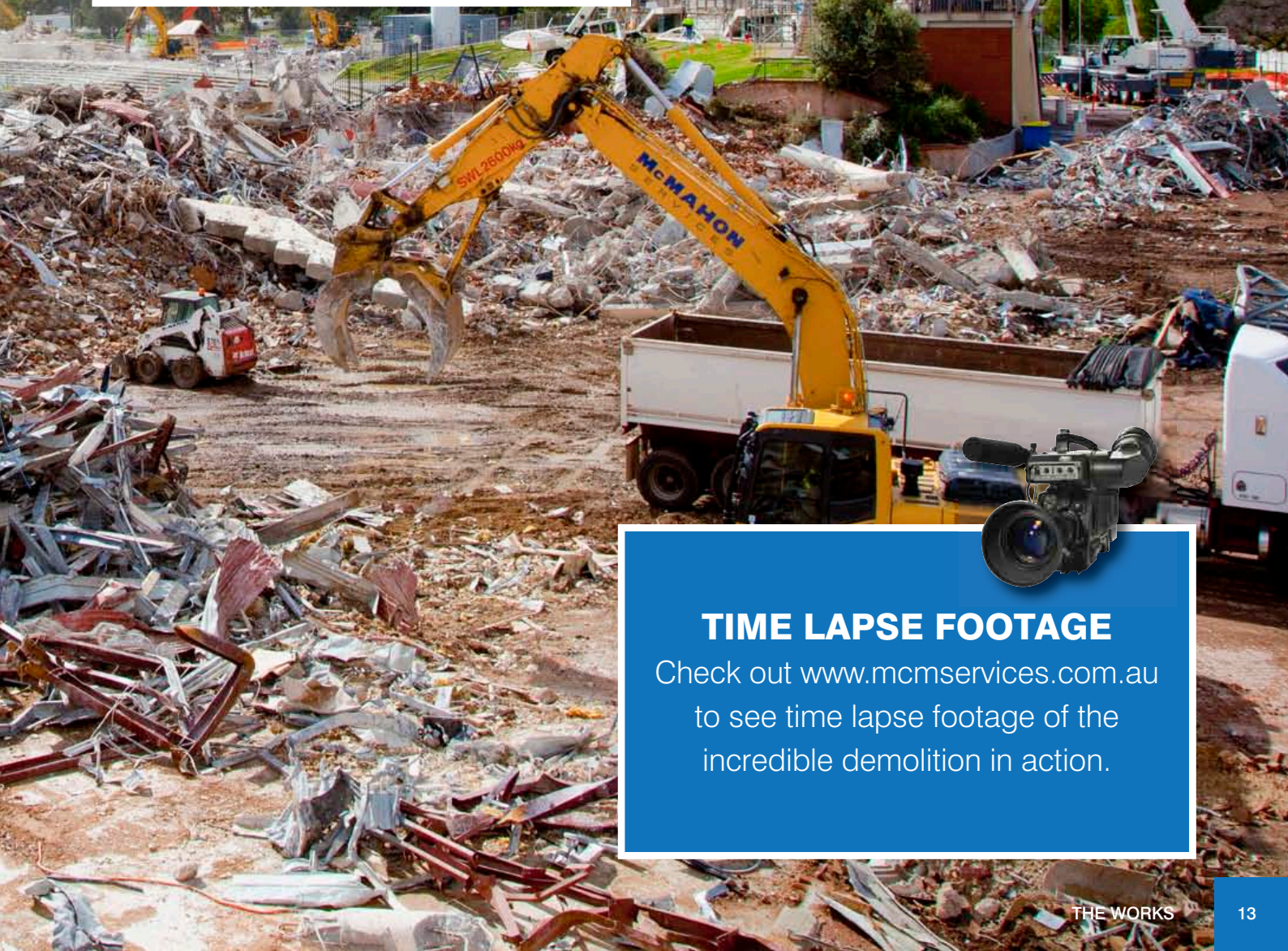
The team of 30 worked tirelessly on a seven-day shift rotation to get the job done and were further assisted by McMahon Services' Indigenous contracting division - Intract. A team of nine completed a wide range of jobs from deconstructing seats in the stands, removing internal fixtures and carpet, wet down duty, dust suppression and gate security to training on excavators and bobcats under the supervision of McMahon Services personnel.

To complete the project, McMahon Services sorted, processed and load out the demolished material with over 50 truck load out movements per day. The materials were either sent directly to the recycled materials stream or further processed off-site into re-usable products.

Utilising the ResourceCo facilities at Wingfield, McMahon Services successfully recycled 98% of demolition materials on site, exceeding the 95% target.

12





TIME LAPSE FOOTAGE

Check out www.mcmservices.com.au to see time lapse footage of the incredible demolition in action.

JOINING AUSTRALIA'S LARGEST CONSTRUCTION PROJECT

McMahon Services has become one of the first contractors engaged for the highly anticipated Australia Pacific LNG Project in Gladstone.

The APLNG Project will see the creation of a new, long-term gas processing and export industry in Queensland and as Australia's largest construction project on record, it's valued at over \$20 billion.

McMahon Services was contracted by the Fulton Hogan McCosker Joint Venture (FHMJV) to process and treat approximately 15,000 cubic metres of Potential Acid Sulphate Soils (PASS) in preparation for the construction of an LNG facility on Curtis Island, utilising the ground-breaking Komatsu RETERRA BZ210-1 Reterra G-Mode.

A team of seven from the Civil division mobilised to Gladstone from Adelaide to undertake the works, along with the Komatsu RETERRA – a high tech soil conditioner capable of achieving the same mixing quality as traditional industrial plants, but in a more time and cost effective method, and with dust and noise reduction functionality.

McMahon Services has extensive experience in handling difficult material and the PASS material was no different. It was known that the material was wet/sloppy marine sediment and that the acidity within the PASS was highly heterogeneous.

Prior to works commencing, the project team established

the site including, building rubble pads and drainage ponds, before assembling the conveyors and feed hoppers into the final work set-up. The Reterra was then moved into position, along with a 22 tonne excavator into the loading position and 17 tonne loader.

The team worked hard to cart in the material to be processed and the stockpile of lime for dosing the soil. A dry run simulation was then performed as if in full production to check the operating systems before processing the massive load.

To treat the PASS material, the project team adopted an innovative method of adding a calculated dose of aglime (calcium carbonate) to the material. Instead of using the RETERRA's own reagent dosing system, an external feed hopper and conveyor system was developed to dose the aglime, as the soil demanded a relatively high ratio.

The treated material was moved using a loader into individual stockpiles measuring 250 cubic metres each. All stockpiles were given an identification number and tested in accordance to the specification. Results confirmed that approximately 15,000 cubic metres of raw Acid Sulphate material was successfully treated.

The project team faced several challenges from rocks and geo tech mats hidden in the mud and wet and sloppy mud all causing production to stop and start, to the team working in extreme heat for the duration of the works.





A CLEAN SLATE FOR YOUTH JUSTICE



A major overhaul of South Australia's Youth Justice System has called for a new 60-bed secure Youth Training Centre (YTC) at Cavan.

The new YTC development is located on a 7.7 hectare Greenfields site and will feature a range of educational and vocational facilities, including an open-style campus, recreational space and an on-site health centre.

McMahon Services was contracted by Hansen Yunken, serving as the Managing Builder Contractors, to complete the civil works package for the new Goldsborough Road site.

Starting with a blank canvas, the first task for the civil team involved site clearing, preparation and mulching of existing trees. Bulk excavation then commenced including

the formation of swales, creeks, detention ponds and mounds. Building plateaus were also constructed in layers using imported fill materials, with the site then ready for the preparation of levels for landscaping and surface treatments.

The design demanded the supply and placement of fill and subgrade to required levels for eleven buildings in total, along with pavements and landscaping, with a total of 6,500 square metres of concrete pavement used.

Also on the job were subsidiary companies Ballestrin and ResourceCo who supplied and installed the concrete for the installation of all external concrete placements including building aprons and footpaths.

With the concrete down, the civil team then installed all kerbing, pram ramps, kerb and spoon and performed all preparation works for bitumen surfacing and decorative gravel pavements.

The site design featured an Education Courtyard to be used for outside learning activities. McMahon Services completed base preparation for a raised mound, seating and decorative concrete works, rubber softfall and all landscaping works along with the supply and installation of all decorative concrete pavement and seats.

Intract Indigenous Contractors were also on board to assist with the civil works during the preparation of the courtyard. The courtyard held Indigenous significance, with the design inspired by Aboriginal elders.

Coloured brushrock stencil concrete, coloured exposed aggregate concrete and symbolic shapes were used to bring the vision to life.

McMahon Services were also contracted for the construction of a staff and visitors car park, internal service bays and internal roads from the supply and placement of ac10/30mm bitumen pavement, PM20 crushed rock and single size aggregate sterile zone pavement to all line marking.

The final stage was the installation of stormwater drainage which included concrete box culverts, rock headwalls, floodgates and lockdown pits/lids.

After ten months on site the team completed the detailed civil works despite wet weather conditions presenting several challenges.

AUSTRALIAN ELECTRICAL COMMISSION FITTED-OUT IN STYLE

Back in April, the Building Services division completed the extensive fit-out of the Australian Electoral Commission (AEC) office space on King William Street, in the centre of Adelaide's CBD.

With the office located on Level 9 and to remain fully operational throughout the duration of the works, pre-planning played out as a critical component of the project.

The site was divided into Zone 1 and Zone 2, with personnel moved one zone while works were completed in the other and then reversed to repeat the process.

The team of ten began the project by removing all existing furniture ready for recycling and commenced the internal demolition of existing walls, partitions, carpet and

furnishings. As a protective measure, a temporary wall was constructed around the central lobby area to create a safe workspace.

All demolition materials were then sorted and transported to ResourceCo for recycling into alternative fuels.

Now with a clean slate, it was time to start the fit-out works, with the installation of multiple floor coverings, new walls, kitchen, disabled toilet facilities, offices, open workstations, reception area, training rooms and a sick room, along with painting works and the full installation of services.

A key requirement for the office was the supply and installation of an acoustic operable wall that would block noise from the Scrutiny Room, used by the Commission during the electoral season.

Furthermore, the Commission required the construction of a Secure Store Room with lockable compactors.

McMahon Services was also responsible for collecting all existing furniture from the suburban offices and then transport and reinstall into the new city space, with the Commission merging all offices into one.

The eleven week project was soon followed by a similar fit-out for the Commonwealth Ombudsman Adelaide Office in Grenfell Street.

Faced with an empty space, the team got right into work with an internal re-fit, including new offices, conference room, reception, workstations and kitchen, along with the installation of air-conditioning and security, plumbing and electrical services.



A PIPELINE TO THE EAST

Two teams from McMahon Services based in Queensland mobilised to New South Wales to undertake the installation of major pipework at two former ExxonMobil sites.

The first team arrived at the former Mobil Young Depot back in January – situated in the south west region of southern NSW - to commence trenching, pipework and wellhead pit installation for a groundwater remediation system.

The purpose of the system is to remediate the subsurface soils and groundwater impacted by petroleum hydrocarbons, which consists of 22 multi-phase extraction wells connected via underground pipes.

McMahon Services installed 1500 metres of 100 millimetres pressure pipes and manifold, and removed approximately 80 tonnes of soil classed as general solid waste.

The remediation pipework required trenching on-site and across a joining roadway, using 100 tonnes of crushed rock and 40 cubic metres of concrete. All road surfaces were then repaired by the Young Shire Council.

“The main challenge on this project was working on a fully operational site, allowing for the supply of fuel to be loaded and unloaded throughout the duration of the works” said Project Manager, Mark Hayes.

“The team was also required to work under the strict

ExxonMobil permitting system and the Mobil and OTEK health and safety systems due to the dynamic nature of the site” said Mark.

In May, the second team mobilised to the former Mobil Mudgee Depot, located 261 kilometres north-west of Sydney. Similar to the Young Depot, this project also required the installation of a remediation piping system for the treatment and removal of contaminated ground water.

McMahon Services installed 900 metres of pressure pipe from eight multi-phase extraction wells, along with the construction of 600 x 600 concrete pits to connect the manifold, install a sewer line and new inspection riser measuring over 60 metres.

During trenching works, the project team discovered that the old tank area had not been backfilled and compacted properly, so 12 tonnes of 80 millimetre rock was brought in to provide a support base while walking in the trench.

The team was also awarded additional work, including the removal and transportation of 350 tonnes of soil to Sydney ready for landfill.

Both depots required traffic management along with provisions for sufficient dust, soil, silt and water controls to avoid contamination in the stormwater systems. Furthermore, special care was needed at locations where excavation works intersected existing underground services.



EMERGENCY RESPONSE CLEAN-UP ONLY ONE CALL AWAY



After a blazing inferno gripped the Mulhern Waste Depot in Wingfield, an emergency response team from McMahon Services was called in to contain the site and commence the mammoth clean-up.

As thick black smoke started to blanket the city, the disaster quickly gained the attention of the public and media.

After receiving the initial phone call, McMahon Services arrived on site the very same day to assess the damage and start work.

"The first step was to contain the oil that had begun to leach off-site into the road gutters, causing serious environmental concerns" said Project Manager, Martin Griffiths.

"The project team created mounds of PM71 containing soil, gravel and other materials, around the front perimeter and along one side of the two acre property to prevent further leaching" he said.

Once the oil measuring approximately 50 centimetres deep was contained on site, the team was responsible for removing asbestos from burnt out temporary site huts that had served as office blocks. Approximately 250 square metres of bonded asbestos was removed and disposed of over a two day period. New site huts were then established so the site could remain operational, along with the isolation and reconnection of services.

In order for trucks to enter and exit the site, all concrete flooring had to undergo industrial cleaning to ensure no oil was transported off site.

McMahon Services also engaged AEC Environmental to conduct sludge testing, to determine the contaminant levels of the oil. With the material exceeding the Low Level Contaminated Waste criteria, IWS Group was called in to determine the most appropriate method of how to treat and dispose of the waste.

The waste was separated into oily and dry waste, with each type to be disposed of at different facilities. The oily waste was loaded into semi-tippers and transported to IWS Dublin where it could be further segregated into

multiple waste chambers. The burnt out dry oil drums and deconstructed infrastructure was then taken to another facility for disposal.

"The nature of the project meant that the site was under constant assessment from SafeWorkSA, Port Adelaide Enfield Council, the client and insurers, along with daily audits from the Environmental Protection Agency" said Martin.

"The dynamic site demanded the careful execution of activities to prevent damage to the surrounding community, along with the coordination of subcontractors and authorities, showcasing the project teams ability to work well under pressure in a high risk environment" he said.

CHEMI-COOL DEMOLITION IN TAS



Travelling to 'an island at the edge of the world', McMahon Services completed the challenging 16 week demolition and remediation of a redundant mercury cell plant within the TasPaper site in Burnie, Tasmania.

A port town located on the North-West coast of Tasmania, the site required the isolation and clean-up of liquid free mercury along with mechanical demolition of a cell plant building.

A team of six began work removing Level 3 and 4 mercury contaminated loose materials from the site, which was loaded into lined sea containers ready for disposal.

Before commencing demolition works, the team de-dusted and vacuumed the entire internal structure of the cell plant building. Positive air filtration for the PC 450-8 excavator was also installed to prevent ingress of mercury vapour into the cabin, with specialised activated carbon pellet filter boxes designed and installed.

The team was equipped with mercury vapour and particulate filters for full face respirators and utilised a new wet decontamination unit, showering at every meal break and end of day.

Following the preparation phase, the next step was to

remove approximately 1800 square metres of asbestos cement roof sheeting. Never seen before in Northern Tasmania, the team used a custom-made McMahon Services Man & Material Workbox to remove the sheets. Also found to have mercury contamination, the asbestos sheeting was then containerised for safe disposal.

The demolition of a timber roof structure which was Level 3 & 4 mercury contaminated was next, with all timber processed to a manageable size and then containerised.

The team then deconstructed the brick and concrete

walls, which were classified with Level 2, 3 & 4 mercury contamination. The Level 2 material was successfully separated and disposed of locally and the Level 3 & 4 material was processed to 100 millimetres minus for treatment.

Ready to tackle the next phase, the team began the demolition of 12 Level 1 & 2 concrete reinforced bleach storage tanks, with all material safely disposed of locally.

The final stage was to remove floor slabs for processing and treating or local disposal according to classification. Free liquid mercury was found within the three layers of



concrete, which measured 18 x 70 metres. After removing the first few metres of slab, the team found mercury had worked its way down every joint in every layer.

"To isolate and collect the free mercury contaminated concrete, the team cleaned the top slab using a wet vacuum, then cut the contaminated concrete either side of each control joint, before manually removing the cut section and placing in a bobcat bucket lined with plastic sheeting ready for disposal into a lined sea container" said Project Supervisor, Daniel Carter.

"This procedure ultimately saved the client additional costs as it reduced the amount of material that could not be treated and would require Level 4 dumping" he said.

This unique demolition project showcased the diverse skills-set of McMahon Services' personnel and the ability to safely undertake high-risk demolition and hazardous waste removal projects.



After 13 years of running his own business, Kym Mattner, or "Hollywood" as he is also known, has come on board as a Civil Site Supervisor at McMahon Services.

Working in earthmoving since he was seventeen, Kym started his career in landscaping before moving into earthworks for the Tea Tree Gully Council. It was at the Council that Kym obtained his qualifications including his white card and builders licence, along with his heavy vehicle, excavator, front end loader and forklift licences.

After three years on the job, Kym and his wife started their family-run earthmoving business, primarily working on housing preparation for companies such as Fairmont Homes and Hickinbotham Homes.

Ready to sell, Kym soon moved to McMahon Services. Over the past seven months, Kym has supervised multiple large-scale civil projects including the Lyell McEwen

Hospital Redevelopment, ASC temporary paint and blast facility construction at Osborne, Whyalla Hospital car park construction, Youth Training Centre civil works at Cavan and the iconic Adelaide Oval Redevelopment.

Since starting with the Civil division, Kym has also gained experience in stormwater installation and civil infrastructure works, further adding to his extensive skills-set.

On weekends, this Riverland local enjoys the great outdoors, from water skiing and jet skiing to motorbike riding and cruising along the River on his houseboat. Pit-stopping in Murbko, half way between Morgan and Blanchetown, Kym along with his family and friends also enjoys setting up camp and riding their trail bikes.

McMahon Services is thrilled to welcome Kym and the wealth of knowledge he brings to the team.

EXCITING NEW CHALLENGES

AMCOR Botany Mill –

Asbestos removal and demolition of No.5 Machine & Stock Preparation Building for Amcor – one of the world's largest packaging companies- located in Sydney, NSW. McMahon Services are also undertaking the installation of tilt up wall panels and sound cladding.

Crushing of Pavement Materials –

Raising and crushing of pavement materials at three pits on the Stuart Highway between Port August and Pimba and Purple Downs Pit near Olympic Dam.

Nomad Room Refurbishment Stage 2 –

Installation of buildings and associated services at OZ Minerals' Carrapateena copper-gold mine.

BP Refinery New Training Centre –

ASB removal, demolition works and roof removal at BP's Bulwer Island refinery situated in Queensland on an area of reclaimed land.

Berry Springs Shopping Village –

Design and construction of 500 square metre commercial building ready for tenancy in the Northern Territory. .

ETSA Utilities PCB Removal –

Hazardous waste removal and disposal at the Brinkworth Substation in South Australia.

Ichthys Accommodation Village –

McMahon Services' largest civil project ever, preparing the site that will house 3,500 FIFO workers that will help build the Ichthys LNG facility in Darwin.

MCMAHON SERVICES

CONTACT US

Adelaide

26 Duncan Road Dry Creek SA 5094
PO Box 542 Enfield Plaza SA 5085
T (08) 8203 3100 | **F** (08) 8260 5210
E adelaide@mcmhservices.com.au

Port Pirie

30 Ellen Street Port Pirie SA 5540
PO Box 143 Port Pirie SA 5540
T (08) 8633 5400 | **F** (08) 8633 4441
E ptpirie@mcmhservices.com.au

Whyalla

16B Forsyth Street Whyalla SA 5600
PO Box 54 Whyalla 5600
T (08) 8644 1068 | **F** (08) 8645 1762
E whyalla@mcmhservices.com.au

Darwin

41 Bishop Street Woolner NT 0800
PO Box 36546 Winnellie NT 0821
T (08) 8930 2500 | **F** (08) 8942 2782
E darwin@mcmhservices.com.au

Brisbane

14/1440 New Cleveland Road Chandler QLD 4155
PO Box 1555 Capalaba QLD 4157
T (07) 3634 4300 | **F** (07) 3245 1685
E brisbane@mcmhservices.com.au

Gladstone

4/40 Marten Street South Gladstone QLD 4680
PO Box 8179, South Gladstone QLD 4680
T (07) 4977 7700
E gladstone@mcmhservices.com.au

Perth

27 Somersby Road Welshpool WA 6106
PO Box 80 Welshpool WA 6986
T (08) 6350 7000 | **F** (08) 6350 1169
E perth@mcmhservices.com.au

Karratha

Lot 104 Exploration Drive,
Gap Ridge Karratha WA 6714
PO Box 903 Karratha WA 6714
T (08) 9183 9500 | **F** (08) 9185 2543
E karratha@mcmhservices.com.au

www.mcmhservices.com.au